



COURSES FOR SCHOOL LEAVERS 2017/18

Matthew Boulton College, Sutton Coldfield College
James Watt College, Stourbridge College
and Kidderminster Academy



BMet
Inspiring futures, realising dreams.

WELCOME

Welcome to BMet. We have a range of courses for you if you are looking to study at one of our colleges across Birmingham and the Black Country. With courses on offer at Matthew Boulton College, Sutton Coldfield College, James Watt College, Stourbridge College and Kidderminster Academy – there's a college close to you where you will find first-class facilities and learning opportunities.

This is the full-time prospectus aimed at you if you are 16-19 years old. We offer courses at every level from entry to higher education, so we are sure we have the right pathway to help you achieve your career goals. Take a look at what we have to offer and come and visit us at one of our Open Events, where you can talk to our tutors, get advice on the support we offer including finance and student welfare and apply to join us.

We look forward to seeing you.

OPEN EVENTS

Join us at one of our Open Events. They take place at Matthew Boulton College, Sutton Coldfield College, James Watt College, Stourbridge College as well as our Kidderminster Academy, Art & Design Centre: Brierley Hill, Birmingham Botanical Gardens and Erdington Skills Centre.

Saturday 8 October 2016

10am-1pm

Thursday 10 November 2016

4pm-7pm (Stourbridge 5pm-8pm)

Wednesday 7 December 2016

4pm-7pm (Stourbridge 5pm-8pm)

Saturday 14 January 2017

10am-1pm

Saturday 17 June 2017

10am-1pm

CONTENTS

Options	2
College Life	6
Success	9
Parents & Guardians	10
Preparing You For Life After College	14
A Good Degree for less	16
Apprenticeships & Employment Training	19
Matthew Boulton College	22
Birmingham Botanical Gardens	40
Sutton Coldfield College	42
James Watt College	60
Erdington Skills Centre	80
Stourbridge College	84
Art & Design Centre	108
Centre of Sporting Excellence	112
Kidderminster Academy	116

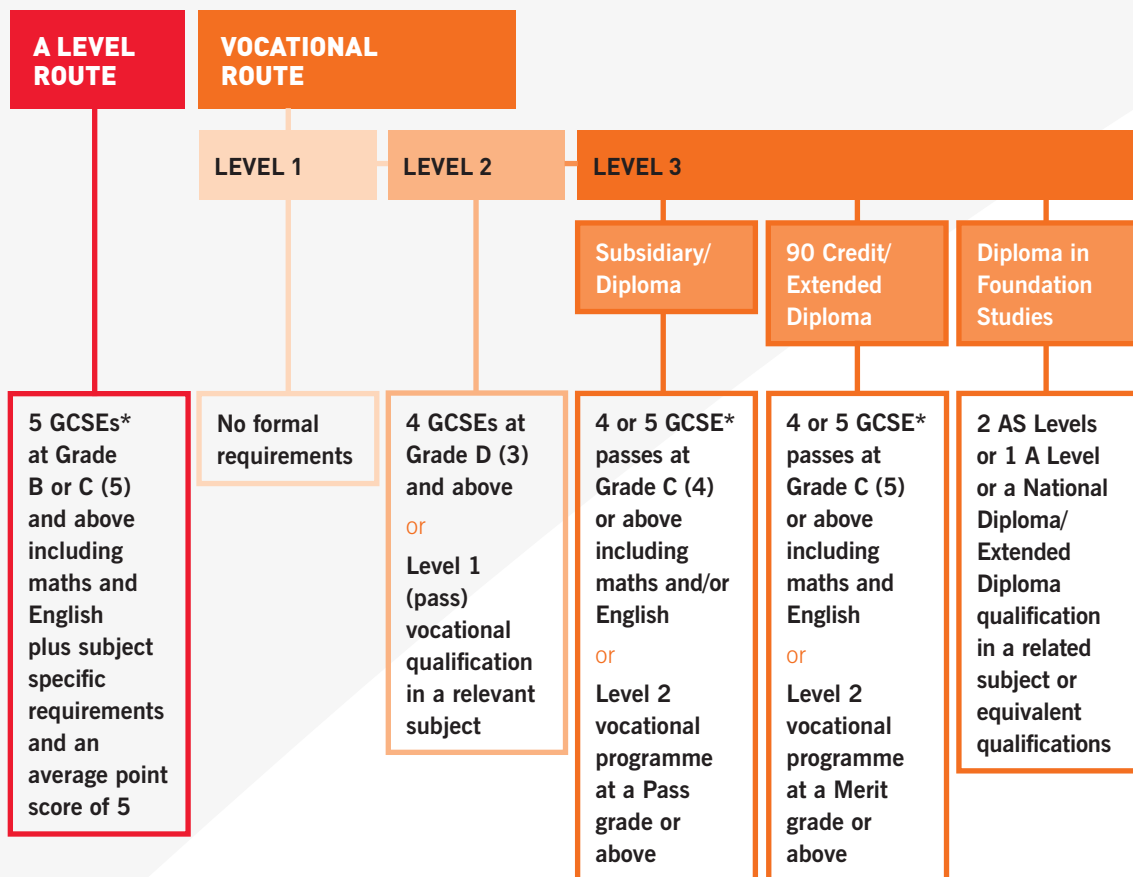
Disclaimer Every effort has been made to ensure accuracy within this prospectus at the time of publication. BMet reserves the right to review, amend, add or cancel subjects or courses. The prospectus does not and will not form any part of any contract or relationship between BMet and any present or future students, nor does it purport to. Please visit www.bmet.ac.uk for the latest information.

OPTIONS

CHOOSING A COURSE THAT IS RIGHT FOR YOU

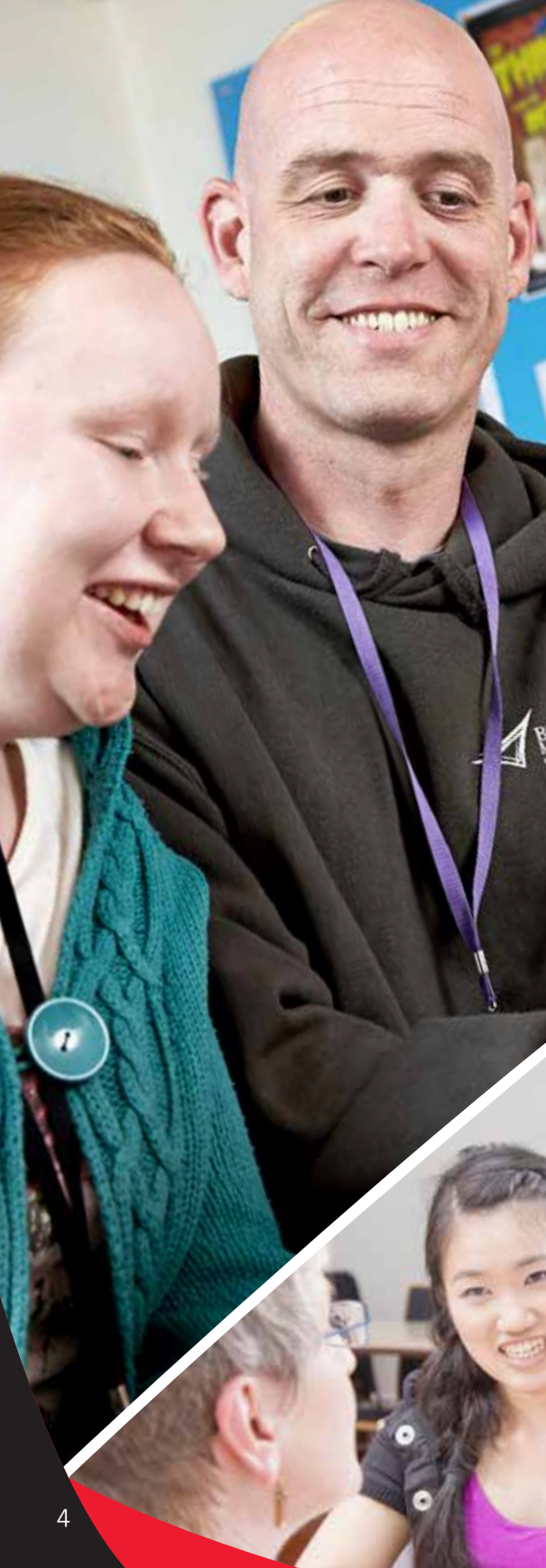
We offer a range of courses at a level that is right for you. The typical entry criteria are shown below, although your chosen course may have specific requirements. If you are unsure about the level of study that will best fit your skills and experience, please talk to one of our Student Service Advisors or come to one of our Open Events.

Entry Criteria



*Some subject areas require you to have specific GCSE grades in areas such as science, business, AAT Accounting and PE. See our website further details.





SUPPORT

Advice and Support

Our trained Student Services Team can provide a whole range of information to help you make the right choice about your studies and get any additional support you might need. If you are struggling to decide on a future career path why not book a Career Interview before you choose your course of study. This will help you focus on your future goals and the steps you need to take to achieve them.

Careers Advice and Guidance

We offer help with university applications, CV preparation and interview practice as well as guiding you through the maze of job applications and choosing your ideal career. We also have links with many top employers and can help you find work experience placements, organise visits to employers and help you in find internships.

If you have additional learning needs

We have excellent facilities and resources to support our students including a helpful team of specialist support staff. Whether you are dyslexic, have mobility access requirements or any other support needs we are here to help.

If you are deaf or visually impaired

We have interpreters, note takers and in many instances can offer one-to-one support for students with learning or study needs. Our Visual Impairment Support Service offers adapted course materials, assistive software and personal learning support.

Free bus passes* for qualifying students

Take advantage of amazing facilities, the best tutors, great success rates and a FREE bus pass for 16-18 year olds studying at Stourbridge and James Watt Colleges. The pass will give you unlimited bus travel across the West Midlands**, which you can use not only to get to college but also to visit your friends at weekends and much more. All our sites are on major bus routes so there's no excuse to be late or miss a class.

Passes are also available at our Sutton and Matthew Boulton Colleges, through our Discretionary Bursary**** fund see below for further details.

Passes are awarded termly. You must be 16-18 years old and studying a full time course to qualify for your first pass.

The College will renew your pass if you maintain a good attendance record***. Your pass can be claimed after enrolment when you start your course.

Financial Support

We want to make sure that everyone is able to study regardless of their financial position. If you join us on a course we have a range of support packages aimed to take the stress out of study.

If you are aged 16 years and over you can apply to the College's Discretionary Bursary Fund**** for assistance with a number of course-related expenses including travel, equipment and the costs of studying in general. The level of support will depend on your individual circumstances.

Students aged 19+

We know that coming back to study after a gap can be daunting and we want to support you every step of the way. So, if you are over 19 or if you are in receipt of means tested benefits we want to help. We know that transport can be expensive so, if you are travelling to college for 3 days or more a week, we give you a travel award each term and if that's not enough we may also be able to pay your course fees and give you up to 50% off your equipment costs.

For courses at Level 3 and above, applicants aged 19 or older on the first day of the course may be able to apply for an Advanced Learner Loan to pay for your course fees.

Visit bmet.ac.uk to find out more about financial support for students aged 19+

Advanced Learner Loan Bursary

Available for students 19+ studying Level 3 and above further education courses in receipt of a loan for course fees.

if you are on a low income we can help with travel, childcare and equipment for your course. See Student Services for further details.

Please note that the financial support packages above are not available for those studying university level courses.

* Terms and conditions apply

** Monetary value equivalent for those living outside of the West Midlands region

*** We will tell you when you enrol what the minimum attendance requirement is

****Eligibility for the Discretionary Bursary required

COLLEGE LIFE

HOW TO APPLY TO STUDY WITH US

- 1** Apply online through the College website www.bmet.ac.uk. There is always help available if you are unsure how to fill in the online application form. We also accept applications via UCAS Progress.
- 2** An acknowledgment email will be sent to confirm we have received your application.
- 3** You will be invited for an interview within two weeks. Please contact us to let us know if the date is unsuitable.
- 4** Details of what to expect at your interview and FAQs about applications can be viewed on our website in the How to Apply area.
- 5** You will receive a text and email reminder of your interview appointment 24 hours in advance. Please ensure that you let us know if you are unable to attend.
- 6** Parents/Guardians will receive details of interview appointments along with a parents' guide to the application/interview process.
- 7** If you apply after 1st July 2017 you will be invited in at the end of August for an interview, so apply as early as you can.
- 8** When you accept a place to study with us you will receive monthly updates about activities and events taking place at the college. In addition, in early summer, you will receive an invitation to attend a College Taster Event in July where you will have the opportunity to meet your tutors, fellow students and get to know more about your college and the course you will be studying.
- 9** During July/August, you will receive an invitation to attend college on or after results day to complete your enrolment. When you enrol, you will receive your timetable and details of your personal tutor ready for the start of your course in September.

GETTING THE MOST FROM COLLEGE LIFE

Sport

We are one of the leading FE Colleges in terms of sporting success, with teams regularly achieving recognition in regional and national competitions. We were even named College of the Year by British Colleges Sport (BCS) and the Association of Colleges (AoC) for our fantastic achievements in 2012/13.

Each of our colleges has a state of the art fitness and exercise suite available FREE to all students. This is staffed by fully trained professionals who can design programmes to help you get fit and stay fit.

Sports Academy

Our Sports Academy runs alongside your main course of study, whether that is an academic or a vocational pathway. There are 18 sports in the core Sports Academy programme, with each sport having a specific training programme and schedule.

The Sports Academy has developed links with many local senior clubs and the sports specific national governing bodies. This provides excellent pathways into increasing sports participation, coaching, leadership and volunteering opportunities.

In addition to playing sport, an academy member will also have access to workshops offering specialist advice on nutrition, fitness training, sports psychology, personal management and career planning. There will also be access to support for injuries and to sports massage for all Academy students, especially for those who require rehabilitation and bespoke recovery programmes.



The major sports in our Academy programme (men's and women's programme unless specified) are:

- Athletics & Cross-Country
- Basketball
- Rugby Union (*men only)
- Football
- Golf
- Cricket
- Netball (*women only)
- Hockey
- Swimming
- Cycling
- Table Tennis
- Triathlon

We also offer the following sports at CLUB Level to allow for some development if this is your specialist sport but also a more centred approach on participation in that sport:

- Volleyball
- Badminton
- Table Tennis
- Cycling

We will also support students who are involved in the following sports (but not limited to):

- Judo
- Trampoline, Gymnastics and Artistic Sports
- Tennis
- Watersports

Enrichment

We offer a wide range of enrichment activities including trips and visits both for fun and to help you with your studies. There are gigs and

performances across all of our colleges and regular charity fundraising activities. We have dedicated student Enrichment Officers whose job is to make sure your time at college is exciting and gives you lots of experiences outside of the classroom or workshop including volunteering opportunities or invites to hear a range of guest speakers, who can motivate your minds.

Student Ambassadors

The College encourages learner involvement in all aspects of college life. One of the ways you can get involved is by becoming a Learner Representative for your course and sharing the views of your fellow students with Heads of Colleges. You can also become a Campus Committee representative.

Student Voice

The College has lots of ways for you to have your say about things you like and things you would like to see changed. Every year we take part in the BIG Teaching and Learning Survey and all the results are shared with students. We also conduct a number of focus groups where we ask for your views on things like how best our Library Service can support you.

Throughout the year we have a range of touch points where you can have your say in person, by phone or by social media and your voice will make change happen. These include formal meetings where your Student Voice Representatives, from departments and from each college meet with their Head of College to share feedback. You can also informally feedback views through your Personal Tutor and through your Enrichment Officer.



SUCCESS

EVERYTHING YOU NEED FOR SUCCESS

A safe environment

Everyone needs a safe environment in which to study, that's why we are committed to making sure you are kept safe from harm, such as bullying or abuse. If you are in an unsafe situation either at home or at College we're here to support you and involve people who can help. We have dedicated Safeguarding Staff at each College who are always available to talk to you whatever your concern.

Mentors and Pastoral Care

As one of our students, you will have access to mentoring support, to get you back on track if you are struggling with your studies. You will also have a designated Personal Tutor, who you will meet regularly to support your academic and personal development.

Your Personal Tutor will:

- Monitor your attendance and punctuality across all subjects
- Monitor your progress and help you set SMART targets
- Have one-to-one meetings with you to discuss how you are progressing on your course and what support you may need to help you achieve
- Liaise with subject tutors to track your progress in each unit and organise additional support should you require it
- Conduct themed group tutorials
- Disseminate course and college information
- Support you if you need careers advice, are applying for jobs or making an application to higher education or for Apprenticeships

- Be the link between home and college; be there to talk to parents / guardians / employers
- Refer you to Student Services if you need financial support.

Library & Learning Resources

Each site has a state of the art Library and Learning Resource Centre with an expert team to provide specialist subject knowledge and help with general enquiries. All centres have an impressive array of facilities, including access to thousands of online periodicals, e-books and learning resources. Equipped with computers for personal study we also have dedicated group study spaces. Our Metro Centres provide additional assistance for anyone who needs a bit of extra help or specialist support – for example with English and maths skills. You can attend on a weekly basis or just drop in from time to time.

PARENTS & GUARDIANS

WORKING WITH US

The start of college life is an exciting time for our learners. By choosing to study with us your child is opening up a wealth of opportunities for their future lives and careers. Students are much more likely to be successful in their studies if an effective partnership exists between them, their tutors and their parents or guardians.

How you can help your child succeed

Before they apply, come and see what we have to offer, our colleges are spread throughout the Midlands and have a unique feel, one will suit their needs and be located close to where you and your family live. Our Open Events take place throughout the year and are a great way to experience the College and get a feel of college life. We strongly encourage parents to attend Open Events with their son or daughter. There are students and teachers on hand to chat about everything from classes and course content to getting the bus. In short, it's the ideal way to discover what the College has to offer your son or daughter.

Once at College we will keep you informed every step of the way, we do this through:

- **Individual Tutors.** Your son or daughter will be assigned an individual tutor who will monitor their progress, set targets and keep them on track throughout their course. They will be there to help with both academic and personal matters and also offer a programme of study related to wider life skills. These include health, money, further study and keeping safe, so your children are in safe hands throughout their time at the College.
- **Student Progress Reports.** Issued twice a year, at the end of November and at the end of March, the reports aim to keep you up-to-date with your son or daughter's academic performance and progress.
- **Parents' Consultation Evenings.** This is the best way to find out how your son or daughter is doing at College. You will have the opportunity to discuss their work, performance and progress with tutors and teaching staff.



FUNCTIONAL SKILLS

English, maths and ICT skills are important within all aspects of our life. These skills are so important that every full-time student must work towards gaining Level 2 English and maths qualifications during the course of their study.

Functional Skills qualifications:

- are valued by employers and further education
- support your child to get a job or progress to higher level courses / university
- help them to use their English and maths skills effectively for real purposes in real situations
- develop the essential skills required for work.



REASONS TO STUDY AT BMet

1 Partnership and employer links

We have connections with some of the world's leading companies and partnerships with leading universities to help you secure your future.

2 Developing your employability skills

Our students are equipped with the skills and expertise that employers demand enabling you to develop your CV and compete in the highly competitive jobs market.

3 Lots of courses to choose from

We offer the widest choice of courses in the Midlands. At BMet, we have a dedicated team of Careers Advisers who can give you the advice, information and support you need to choose the right course and to achieve your career goals.

4 Clubs and societies

We are one of the leading FE Colleges in terms of sporting success and offer a wide range of sporting opportunities. We also offer a wide range of enrichment activities including trips and visits both for fun and to help you with your studies. There are gigs and performances across all of our colleges and regular charity fundraising activities.

5 Academic standards

Excellent pass rates in many areas of provision, including A Levels. Ofsted Inspectors found we had outstanding teaching, learning and assessment in manufacturing technology Apprenticeships and good teaching, learning and assessment in sport and visual arts.

6 Free bus pass

Students who are 16-18 and study at either Stourbridge or James Watt College receive a FREE bus pass. The pass provides unlimited bus travel across the West Midlands, which can be used not only to get to college but also to visit friends at weekends and much more. Students who are 16 years and over studying at any of our other sites, can apply to the College's Discretionary Bursary Fund for assistance with course-related expenses and travel costs.*

*terms and conditions apply

7 Excellent facilities

We've invested an incredible £20 million in redeveloping or refurbishing our sites both in Birmingham and in the Black Country, improving facilities and providing state of the art work spaces and classrooms for students and staff. As a BMet student you have access and can benefit from the facilities at all of our colleges in the area.

8 Student voice

Students are at the heart of our college and your voice matters to us. Throughout the year we have a range of opportunities where you can have your say to help us create an even better BMet.

9 Learn from experts

Our staff are industry experts with the skills and expertise to help you develop the skills employers value.

10 Support

At BMet we want to support and empower you to be independent, inspired and challenged to develop both personally and academically.

Through personal tutors, mentors, safeguarders, careers advisors, our student services team and all of our staff and tutors, we are committed to ensuring you make the most of your time with us.



LIFE AFTER COLLEGE

PREPARING YOU FOR LIFE AFTER COLLEGE

We're committed to enhancing the employability of all our students to enable them to compete and flourish in a competitive, fast-moving knowledge-based economy.

Your course will help you to develop a wide range of employability skills. In addition there are many enrichment opportunities available to help you to develop your skills further. This includes:

- Educational visits
- External speakers
- University master classes
- Volunteering opportunities
- Community service projects
- Mentoring opportunities

THE GREATER BIRMINGHAM PROFESSIONAL SERVICES ACADEMY

The Professional Services Academy is a unique opportunity for you to study for your chosen career in law, business, finance, accounting and other professional services whilst making valuable industry contacts with the Academy's partners. The Academy has the backing of several of the leading firms from the financial, legal, accounting and business community, who are committed to fostering the professional talent of the city for potential future employment in their sectors. You will be working with the largest and most successful firms in the area including: Deloitte, Deutsche Bank, GVA, Gateley, KPMG, LaSer UK, Lloyds Bank and Wesleyan meaning you will enjoy a range of benefits that will best prepare you for your working life.

The Academy is located at our Matthew Boulton College and the majority of learning will be delivered on this site, although you should be prepared to travel to a range of business venues to take full advantage of the onsite visits and guest lectures.

To find out more or to apply visit our website: bmet.ac.uk

CAREER COLLEGES

BMet are offering two exciting new programmes designed by employers to open up as many employment opportunities as possible. The programmes, called Career Colleges, enables our students on Digital Media courses and those studying Business looking to enter the professional services sector, to further enhance their employability skills. The Career Colleges include work placements and live briefs.

Why not join us to study:

- **Digital Media**

Digital Media and Creative Studies Level 1, Level 2 and Level 3 with pathways in Graphic Design, Advertising and Web Design, Games Development, 3D Animation and Architectural Visualisation, TV and Film Special Effects and Digital Video and Broadcast Media

or

- **Professional Services as part of our Greater Birmingham Professional Services Academy**

Level 2 or 3 Diploma Pathway in Business

To find out more or to apply visit our website: bmet.ac.uk



A GOOD DEGREE FOR LESS

ACCESS TO HIGHER EDUCATION

If you are 19 or over and think you've missed the opportunity to go to university, then Access to Higher Education could be for you. These are qualifications which prepare people without traditional qualifications for study at university.

Join over 42,000 students across the country in studying for an Access to Higher Education qualification. These courses are perfect for you if:

- You don't have the necessary qualifications to go to university
- You have been out of education for a while
- You need to develop your study skills and build your confidence.

Access to HE attracts a diverse range of students, and there's no upper-age limit.

Our Facilities

We have a wide range of subjects on offer, meaning you can start specialising in your chosen career path straight away whilst topping up your study skills and English and maths qualifications, vital for a place at university.

We offer the following Access to Higher Education Courses:

- Business Access to HE
- Law & Criminology Access to HE
- Information Technology Access to HE
- Engineering & Technology Access to HE
- Health & Social Care Access to HE
- Social Science Access to HE
- Science Access to HE
- Sport Access to HE
- Education Pathways Access to HE

Higher Education

We offer over 40 university level courses at BMet so once you've completed your Level 3 or Access to Higher Education course, you can stay with us to gain your higher qualification. We offer BSC (Hons), Higher National Diplomas (HNDs), Higher National Certificates (HNCs) and Foundation Degrees. Staying with us means you study in small friendly groups, close to home, family and friends. What's more, we're determined that you will graduate with the skills and knowledge you need to find employment, helping you realise your dreams.

To find out more or to apply visit our website: bmet.ac.uk





APPRENTICESHIPS

WHAT IS AN APPRENTICESHIP?

What better way to start working life than gaining qualifications and experience at the same time? Apprenticeships offer you the chance to develop the skills and confidence needed in today's working world, skills that will be useful throughout your working life. Find out what Apprenticeships are all about, what they can do for you and how to become an apprentice.

Eight great reasons to become an apprentice:

- Gain qualifications
- Earn while you learn
- Job specific skills
- Gain real experience
- Route to university
- Build your confidence
- Lots of options
- Great prospects.

If you are the kind of person who wants to learn through practical experience and enjoys a challenge then an Apprenticeship will get you where you want to go and pay you while you do it.

As an apprentice you will become an employee of an organisation where you will be treated like any other employee. You will learn skills that are useful in life like team working, communication and time management, as well as skills related to specific jobs like hairdressing or bricklaying.

When do I attend?

You will either be in work for four days a week and in college one day or work five days a week and an apprenticeship assessor will come to you in the workplace.

What will I do?

During your Apprenticeship you will gain a range of qualifications that will set you on the right track:

- A diploma in a specific subject area – we have over 40 to choose from
- A technical certificate – this checks your understanding of the skills you need to use at work
- A functional skills qualification like maths, English and IT
- Employers rights and responsibilities – where you learn about the law and employment.

The best part is that you get all this and get paid, earning in excess of £120 per week. (Apprentices earn an average of £170 per week.)

What entry qualifications do I need?

The level of qualifications vary according to what level of Apprenticeship you wish to study and what requirements the employer has. As a guide, you will need:

■ Intermediate – Level 2

2 – 4 GCSEs or Level 1 Diploma

■ Advanced – Level 3

5 GCSEs or a Level 2 Diploma

Most employers require you to have good English and maths skills and may require you to continue your studies in these areas alongside your Apprenticeship.

Apprenticeships on offer at BMet:

- Accounting
- Assistant Accountant
- Barbering
- Beauty
- Bench Joinery
- Bricklaying
- Business Administration
- Carpentry
- Childcare and Early Years
- Cleaning and Support Services
- Creative Digital Media
- Customer Service
- Dental Nursing
- Design
- Electrical & Electronic Servicing
- Electrotechnical
- Engineering
- Engineering Manufacture
- Event Management
- Exercise and Fitness
- Facilities Management
- Financial Services - Investment Operations Standard
- Financial Services Administrator
- Gas
- Hairdressing
- Health and Social Care
- Horticulture
- Hospitality and Catering
- HR Support
- Infrastructure Technician
- IT Telecomms
- Journalism
- Management
- Marketing
- Motor Vehicle
- Operation Delivery Officer
- Painting and Decorating
- Paralegal
- Pharmacy
- Plastering
- Plumbing and Heating
- Recruitment Resourcer
- Retail
- Schools & Teaching Learning Support Assistant
- Team Leading
- Warehouse

GET INTO EMPLOYMENT

If you feel you're not quite ready for an Apprenticeship or employment then our Get Into Employment programme offers you a great step in the right direction. You need to be aged 16-24, not in a job and have a Level 1 qualification to take part. On the programme you will complete work preparation training, work experience, learn about CV writing and improve your English and maths, putting you in a great position to start an Apprenticeship or gain employment afterwards. There are a number of subjects on offer and they are growing all the time. We currently offer:

- Get Into Barbering
- Get Into Beauty Consultancy
- Get into Business Administration
- Get into Construction
- Get Into Dental Nursing
- Get Into Dental Technology
- Get Into Football Coaching & Fitness
- Get Into Horticulture
- Get Into Hospitality
- Get Into ICT & Systems Development
- Get Into Marketing
- Get Into Motor Vehicle
- Get Into Pharmacy
- Get Into Retail





Matthew Boulton College

part of **BMet**

MATTHEW BOULTON COLLEGE
JENNENS ROAD, BIRMINGHAM CITY CENTRE

Matthew Boulton College is our city centre location, just a few minutes' walk from Moor Street and New Street railway stations, with bus stops located right outside the main entrance. The College is in the heart of the Learning Quarter, neighbours with Aston University and is close to the developments in Eastside and to Digbeth's Custard Factory.

The College is an eight-storey building with zoned areas and facilities which enable our students to display their work, either through exhibitions in photography, graphics or fashion, host events like the Big Bang event for science or engineering; develop their skills to become programmers of the future in our Samsung Design Suites, demonstrate their entrepreneurial skills, host a debating club, refine their music skills to become top of the bill at Glastonbury in the future, be involved in supporting the podiatry clinic, or raise funds for a local charity.

Matthew Boulton College is the headquarters for our Greater Birmingham Professional Services Academy. This is a joint venture with leading professional services organisations such as Deloitte, Deutsche Bank, GVA, Gateley, KPMG, LaSer UK, Lloyds Bank and Weleyan, offering you the opportunity to gain real work experience and develop long term employment skills within the professional sector.



A LEVELS

THE BMet SIXTH FORM EXPERIENCE

BMet understands that leaving school is a big step. At our Matthew Boulton College, Stourbridge College and Sutton Coldfield College sites we offer the sixth form experience with award winning facilities and an excellent record of academic achievement. We have a special ethos where everyone is encouraged and supported both academically and personally. We pride ourselves on not only preparing you for university study but also for the world of work. With more subjects on offer than any other college in the area and a package of extras, we know we have something for everyone.

'A' Levels

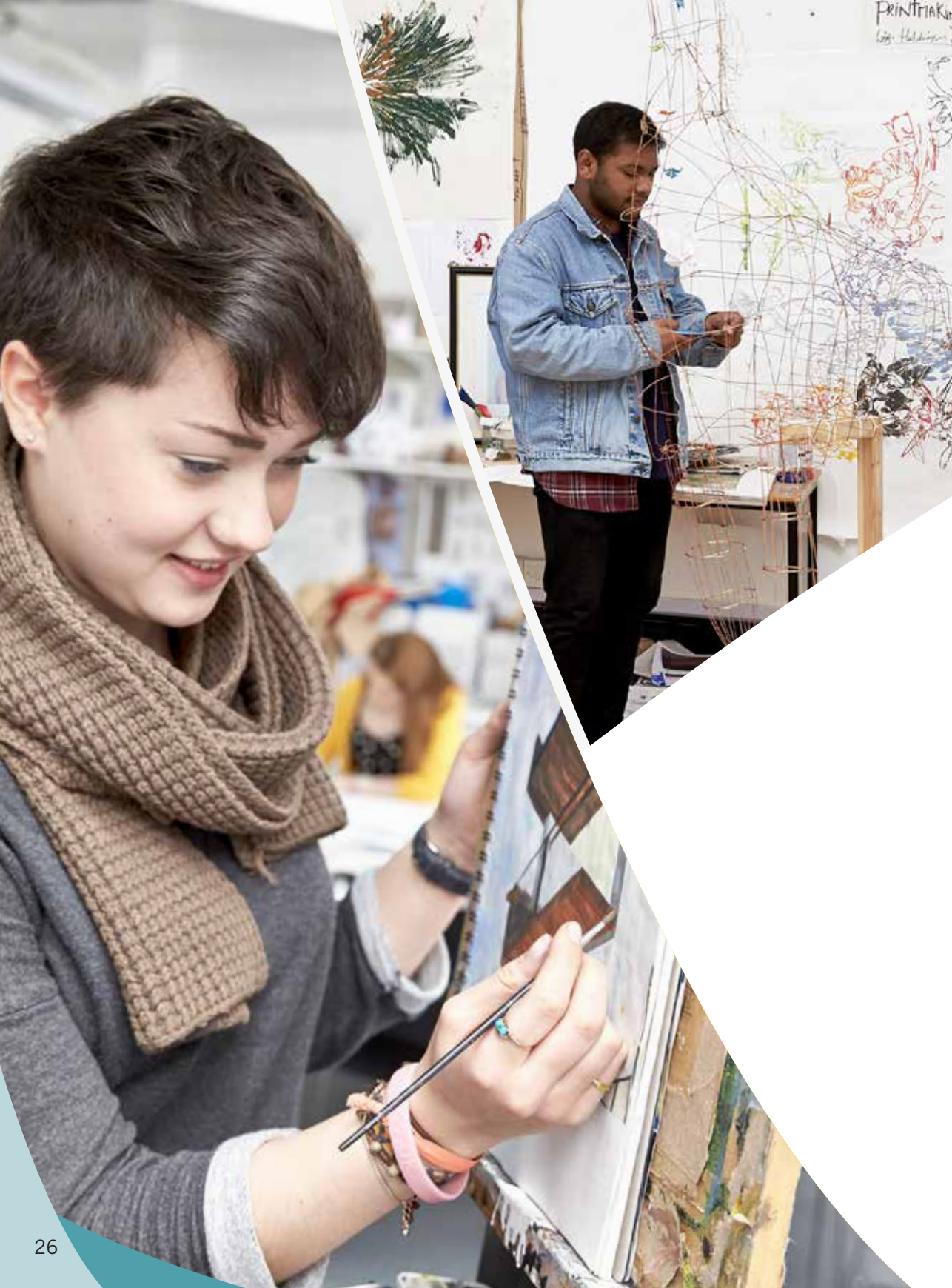
You will study A Level subjects for two years and will be examined in them at the end of this period. AS subjects may be available for you to select, but these are now stand alone qualifications and do not contribute to the final A Level grade.

When you enrol on an A Level programme at BMet you will be asked to choose three different subjects which will be studied throughout the two-year course.

A Levels at Matthew Boulton College

- Applied Law Certificate
- Applied Science Certificate
- Art & Design (Graphics)
- Business Studies
- Computing
- English Language & Literature
- English Literature
- Geography
- History
- Law
- Maths - Further Maths
- Maths
- Media & Music Certificate
- Philosophy
- Photography Certificate
- Psychology
- Religious Studies
- Sociology





ART & DESIGN

WHY STUDY ART & DESIGN AT MATTHEW BOULTON COLLEGE?

The creative sector continues to grow at more than twice the rate of other industries, providing a great range of career opportunities. Our art & design courses are accredited by the prestigious UALAB (University of the Arts London Awarding Body), we've state-of-art studios based at Millennium Point that contain Mac labs and exhibition space and what's more you'll get to work on live projects for real clients providing you with genuine industry experience and a portfolio of work to show to prospective employers.

SUBJECT	LEVEL		
	1	2	3
UAL Art & Design Diploma	■	■	
UAL Graphic Design & Advertising Animation Diploma			■
UAL Photography, Lens & Light-Based Image Diploma			■
Design Apprenticeship	Apprenticeships are offered at varying levels		

Entry Requirements

A guide to our entry requirements can be found on page 2. For specific course entry requirements please visit the relevant section at bmet.ac.uk.

Career opportunities

Our students go on to become:

- Animators
- Exhibition Designers
- Fine Artists
- Graphic Designers
- Illustrators
- Printmakers
- Production Designers
- Fashion Designers
- Textile Designers
- And Many More

Art & Design courses are also available at

Sutton Coldfield College
James Watt College
Art & Design Centre
Kidderminster Academy

BUSINESS & PROFESSIONAL SERVICES

WHY STUDY BUSINESS & PROFESSIONAL SERVICES AT MATTHEW BOULTON COLLEGE?

Business and professional services continue to grow and evolve within Birmingham and the Black Country. Our learners go on to take a leading role in the region's economic development; whether it's working in management, financial services, property, law, human resources or marketing and advertising. Our 'working' office environment at Matthew Boulton College enables you to experience the multiple duties performed by administrators such as reception desk, co-ordinating print jobs and mail outs and preparing large databases. The Greater Birmingham Professional Services Academy based at Matthew Boulton provides links with the region's business community – you'll get to benefit from the expertise of some of the area's leading business professionals. Specific entry criteria may apply for some courses.

SUBJECT	LEVEL		
	1	2	3
AAT Certificate in Accounting		■	
AAT Accounting Diploma			■
Business Administration Diploma	■	■	
Business Diploma			■
Business Extended Certificate		■	
Business Law Diploma			■
CILEX Legal Secretaries Certificate		■	■
CISI Business & Financial Services Certificate			■
Law & Business Skills Diploma	■		
Professional Services Diploma Careers College		■	■
Accounting Apprenticeship	Apprenticeships are offered at varying levels		
Financial Services Administrator Trailblazer Apprenticeship standard			
Financial Services - Investment Operations Standard Apprenticeship			
Paralegal Apprenticeship			
Recruitment Resourcer Apprenticeship			
HR Apprenticeship - HR Support Apprenticeship			
Event Management Apprenticeship			
Assistant Accountant Apprenticeship			
Operation Delivery Officer Apprenticeship			
Journalism Apprenticeship			

Entry Requirements

A guide to our entry requirements can be found on page 2. For specific course entry requirements please visit the relevant section at bmet.ac.uk.

Career opportunities

Our students go on to become:

- Bankers
- Business Analysts
- Insurance Brokers
- Stock Brokers
- Retailers
- Barristers
- Solicitors
- Corporate Lawyers
- Legal Executives
- And Many More

Business & Professional Services courses are also available at

Sutton Coldfield College
Stourbridge College
James Watt College



CHILDCARE AND EARLY YEARS

WHY STUDY CHILDCARE AND EARLY YEARS AT MATTHEW BOULTON COLLEGE?

The childcare and early years sector is worth £5.57 billion in the UK and there is a constant demand for high quality care professionals. More and more people with children require childcare services so the industry is growing all the time. We offer a range of childcare courses from Level 1 to Level 3 and childcare Apprenticeships.

SUBJECT	LEVEL		
	1	2	3
Children & Young People's Workforce & Health & Social Care Certificate	■		
CACHE Introduction to Early Years Education & Care Certificate		■	
Childcare & Education Certificate			■

Entry Requirements

A guide to our entry requirements can be found on page 2. For specific course entry requirements please visit the relevant section at bmet.ac.uk.

Career opportunities

Our students go on to become:

- Parent Partnerships Workers
- Inclusion Support Workers
- School or Nursery Managers
- And Many More

Childcare & Early Years courses are also available at

Sutton Coldfield College
James Watt College
Stourbridge College
James Watt College



COMPUTER SCIENCE & ICT

WHY STUDY COMPUTER SCIENCE & ICT AT MATTHEW BOULTON COLLEGE?

So much of our lives depend on IT systems and networks running smoothly, and with careers in the industry increasing all the time, computer science is one of the most popular subject areas to study. Our state-of-the-art labs and workrooms at Matthew Boulton College ensure you'll be using the latest technology and as well as covering the technical side, our courses will provide you with a better awareness of IT within the wider community; looking at rights and responsibilities, telecommunications and health and safety.

SUBJECT	LEVEL		
	1	2	3
Apps and Software Development			■
Creative Computing & IT Diploma			■
IT User Diploma	■	■	
IT Telecomms Apprenticeship	Apprenticeships are offered at varying levels		

Entry Requirements

A guide to our entry requirements can be found on page 2. For specific course entry requirements please visit the relevant section at bmet.ac.uk.

Career opportunities

Our students go on to become:

- Database Administrators
- Technical Support Staff
- Programmers
- App Designers
- Computer Game Developers
- Multimedia Designers
- Systems Developers
- Web Designers
- And Many More

Computer Science & ICT courses are also available at

Sutton Coldfield College
Stourbridge College



DENTAL

WHY STUDY DENTAL AT MATTHEW BOULTON COLLEGE?

Our Straumann Centre of Excellence at Matthew Boulton College is a cutting edge facility that demonstrates the innovative software solutions that are shaping the industry. We have strong links with Birmingham Dental Hospital, Health Education West Midlands and a wide range of dental practices, other education providers and dental professional bodies that will enhance your industry knowledge and the professional roles you can progress on to.

Career opportunities

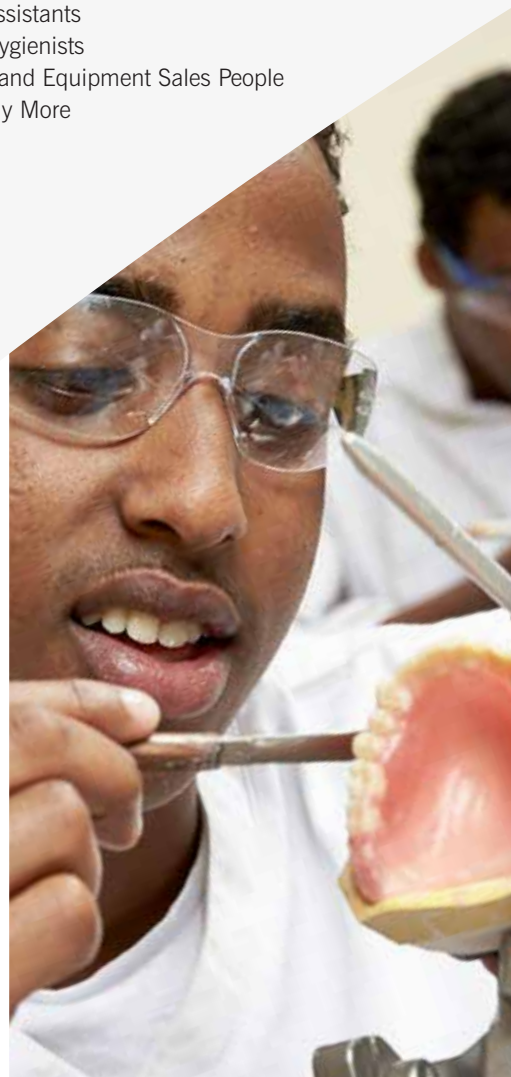
Our students go on to become:

- Dental Technicians
- Dental Assistants
- Dental Hygienists
- Material and Equipment Sales People
- And Many More

SUBJECT	LEVEL		
	1	2	3
Dental Technology Diploma Level 3			■
Dental Nursing Apprenticeship	Apprenticeships are offered at varying levels		

Entry Requirements

A guide to our entry requirements can be found on page 2. For specific course entry requirements please visit the relevant section at bmet.ac.uk.





ENGINEERING

WHY STUDY ENGINEERING AT MATTHEW BOULTON COLLEGE?

Engineering is at the heart of car making, food manufacturing and the preservation of energy resources among many other things. Engineering UK reports that an estimated 2 million more people will be working in engineering over the next 5 – 10 years. We have CAD and autocad software to equip you with the ability to produce drawings of the highest standard for architectural and engineering development and we've partnerships with Jaguar Land Rover, Caterpillar and BMW which means industry insight and support, as well as engineering and manufacturing Apprenticeships with some of the world's largest employers.

SUBJECT	LEVEL		
	1	2	3
Electronic Engineering Diploma		■	■
Electrical & Electronic Servicing Apprenticeship	Apprenticeships are offered at varying levels		

Entry Requirements

A guide to our entry requirements can be found on page 2. For specific course entry requirements please visit the relevant section at bmet.ac.uk.

Career opportunities

Our students go on to become:

- Aeronautical Engineers
- CAD Technicians
- Software Developers
- Telecommunication Specialists
- Building Inspectors
- Construction Managers
- Design Consultants
- Safety Officers
- And Many More

Engineering courses are also available at

James Watt College
Stourbridge College



FASHION & RETAIL

WHY STUDY FASHION & RETAIL AT MATTHEW BOULTON COLLEGE?

A number of our courses are accredited by the prestigious UALAB (University of the Arts London Awarding Body) and our fashion labs at Millennium Point attract hundreds of learners eager to be inspired by the vibrant setting, collaborative projects and exciting visits and activities. You'll get to increase your confidence and experience with practical projects such as organising an 'on location' photoshoot, an end of year show, producing a magazine, creating a catwalk event or running a pop up shop.

SUBJECT	LEVEL		
	1	2	3
Fashion & Retail Diploma		■	■
Retail Apprenticeship	Apprenticeships are offered at varying levels		

Career opportunities

Our students go on to become:

- Fashion Designers
- Tailors
- Production Managers
- Stylists
- Buyers
- Marketing/Brand Managers
- Merchandisers
- And Many More

Fashion & Retail courses are also available at

James Watt College
Kidderminster Academy

Entry Requirements

A guide to our entry requirements can be found on page 2. For specific course entry requirements please visit the relevant section at bmet.ac.uk.

FOUNDATION LEARNING

WHY STUDY FOUNDATION LEARNING AT MATTHEW BOULTON COLLEGE?

Foundation learning is the name given to courses at entry level and is a great opportunity for you to continue your education at your own pace. We offer personalised programmes all aimed at your needs, with lots of support so you can get the most out of your course. Courses are bite sized to keep you interested, motivated and inspired and the experience will give you a new love of learning you thought you may never have.

SUBJECT	ENTRY LEVEL			LEVEL 1
	1	2	3	
Vocational Studies Award			■	
Vocational Studies Certificate				■
ESOL 16-18	■	■	■	

Entry Requirements

A guide to our entry requirements can be found on page 2. For specific course entry requirements please visit the relevant section at bmet.ac.uk.

Career opportunities

Most of our students go on to study Level 1, 2 and 3 qualifications in a wide variety of subject areas.

Foundation Learning courses are also available at

Sutton Coldfield College
James Watt College
Stourbridge College
Art & Design Centre
Centre of Sporting Excellence



HEALTH & SOCIAL CARE

WHY STUDY HEALTH & SOCIAL CARE AT MATTHEW BOULTON COLLEGE?

Promoting a healthy lifestyle, caring for the elderly and infirm and becoming a medical practitioner are arguably some of the most fulfilling career paths a person could pursue. Studying to join the health, medical and care profession means understanding the theory behind physiology and anatomy and being aware of government initiatives and healthcare policies relating to patient and client care.

Health & Social Care courses are also available at

Sutton Coldfield College
James Watt College
Stourbridge College

SUBJECT	LEVEL		
	1	2	3
Health & Social Care Award	■		
Health & Social Care Diploma			■

Entry Requirements

A guide to our entry requirements can be found on page 2. For specific course entry requirements please visit the relevant section at bmet.ac.uk.

Career opportunities

Our students go on to become:

- Nurses
- Midwives
- Physiotherapists
- Dieticians
- And Many More



MEDIA, MUSIC & PERFORMANCE

WHY STUDY MEDIA, MUSIC & PERFORMANCE AT MATTHEW BOULTON COLLEGE?

We have our own broadcast studios, record label and performing arts academy which will help you gain the necessary skills and experience as an aspiring artist or technician. Matthew Boulton College is the home of Forerunner Records the hub from which our music performance and technology students get to write, record, perform and release their material. Bands and artists on the label perform regularly at venues in and around Birmingham.

SUBJECT	LEVEL		
	1	2	3
Music Performance Diploma	■	■	■
Music Production Diploma			■
Music Technology Diploma		■	

Entry Requirements

A guide to our entry requirements can be found on page 2. For specific course entry requirements please visit the relevant section at bmet.ac.uk.

Career opportunities

Our students go on to become:

- Writers
- Directors
- Producers
- Technicians
- Music Arrangers
- Editors
- Sound Engineers
- Stage Managers
- Backing Vocalists
- Booking Agents
- Box Office Managers
- Choreographers
- And Many More

Media, Music & Performance courses are also available at

Sutton Coldfield College
James Watt College
Stourbridge College
Kidderminster Academy

SCIENCE & MEDICAL

WHY STUDY SCIENCE & MEDICAL AT MATTHEW BOULTON COLLEGE?

If you want to develop your analytical and research skills, are interested in discovering new trends and patterns or are looking for a broader way of understanding the world, then studying science at Matthew Boulton College can offer you all this and a whole lot more. We have exceptional laboratories for the teaching of biology, chemistry and physics and what's more we're the regional STEM (Science, Technology, Engineering and Mathematics) Centre for the West Midlands. This means we host and participate in many events that promote the study of these subjects at GCSE level and beyond.

SUBJECT	LEVEL		
	1	2	3
Applied Science Diploma	■		■
Applied Science Certificate		■	
Medical Science Diploma		■	■
Pharmacy Apprenticeship	Apprenticeships are offered at varying levels		

Entry Requirements

A guide to our entry requirements can be found on page 2. For specific course entry requirements please visit the relevant section at bmet.ac.uk.

Career opportunities

Our students go on to become:

- Astronomers
- Biologists
- Meteorologists
- Ecologists
- Researchers
- Forensic Scientists
- Biomedical Scientists
- Clinical Biochemists
- Radiologists
- Microbiologists
- Paramedics
- And Many More

Science & Medical courses are also available at

Sutton Coldfield College
Stourbridge College



Botanical Gardens

part of **BMet**

BIRMINGHAM BOTANICAL GARDENS
WESTBOURNE ROAD, EDGBASTON

In the beautiful surroundings of the Botanical Gardens, you will find our study centre which gives you a real sense of what it's like working in the great outdoors. Working alongside experts you will be out and about whatever the weather. We are the only college in the city offering qualifications in conservation, countryside, environmental studies, horticulture and floristry and our classes are taught by experts who still work in the sector across the region.

Students studying at the Birmingham Botanical Gardens can also access the facilities at all of our sites including nearby Matthew Boulton College.

HORTICULTURE & CONSERVATION

WHY STUDY HORTICULTURE & CONSERVATION AT BIRMINGHAM BOTANICAL GARDENS?

Our Horticultural Academy based at Birmingham Botanical Gardens specialises in providing qualifications in horticulture, gardening and conservation. You'll get to study in unique surroundings with 15 acres of landscaped gardens planted with roses, alpine, perennials, rare trees and shrubs. Courses are ideal if you like working outdoors or are considering becoming self-employed.

Career opportunities

Our students go on to become:

- Garden and Landscape Designers
- Ornamental Plant Growers
- Garden Centre Staff/Managers
- Greenkeepers/Groundsmen
- Soil Scientists
- Commercial Growers
- Horticulture Consultants
- And Many More

SUBJECT	LEVEL		
	1	2	3
Conservation, Countryside & The Environment Diploma		■	
Countryside Management Diploma			■
Floristry Diploma		■	
Horticulture Diploma		■	■
Horticulture Apprenticeship	Apprenticeships are offered at varying levels		

Entry Requirements

A guide to our entry requirements can be found on page 2. For specific course entry requirements please visit the relevant section at bmet.ac.uk.





Sutton Coldfield College

part of **BMet**

SUTTON COLDFIELD COLLEGE
LICHFIELD ROAD, SUTTON COLDFIELD

Sutton Coldfield College is easily accessible from Birmingham City Centre and the surrounding area. The College is situated on Lichfield Road, just a five minute walk from the train station and the town centre, with bus stops located at the top of the driveway. The College has an open feel to it, with buildings dedicated to specialist teaching and learning environments, such as a nursery for early years courses, sports hall and gym for our award winning sports academies, the Outline Centre and exhibition space for art and design and the theatre for dance and performing arts productions.

Sutton Coldfield College is also the centre for our ground breaking 'Collaboratory' with IBM. This is a space dedicated to future developments in computer science and use of IT across all aspects of life and employment. The dedicated 'lab' enables you to experience the future of IT both in a classroom and in the 'cloud', supporting you in college and outside.

Our wide range of specialist staff focus on preparing our students for the world of work and enhancing their personal statements to secure places at their preferred universities. We offer a range of vocational courses and A Levels that have excellent success stories.

While studying it's important to keep your energy levels up so our Costa coffee shop and large canteen has plenty of healthy and tasty choices. There is also a well-equipped learning resource centre, where students can take advantage of free periods to catch up on coursework or revise.



A LEVELS

THE BMet SIXTH FORM EXPERIENCE

BMet understands that leaving school is a big step. At our Matthew Boulton College, Stourbridge College and Sutton Coldfield College sites we offer the sixth form experience with award winning facilities and an excellent record of academic achievement. We have a special ethos where everyone is encouraged and supported both academically and personally. We pride ourselves on not only preparing you for university study but also for the world of work. With more subjects on offer than any other college in the area and a package of extras, we know we have something for everyone.

'A' Levels

You will study A Level subjects for two years and will be examined in them at the end of this period. AS subjects may be available for you to select, but these are now stand alone qualifications and do not contribute to the final A Level grade.

When you enrol on an A Level programme at BMet you will be asked to choose three different subjects which will be studied throughout the two-year course.

A Levels at Sutton Coldfield College

- Applied Law Certificate
- Biology
- Business Studies
- Chemistry
- Computing
- Drama & Theatre Studies
- Economics
- English - Creative Writing
- English Language & Literature
- English Language
- Fine Art
- Geography
- History
- Law
- Maths - Further Maths
- Maths
- Media Studies
- Philosophy
- Physics
- Psychology
- Religious Studies
- Sociology
- Sport & Exercise Sciences Certificate



ART & DESIGN

WHY STUDY ART & DESIGN AT SUTTON COLDFIELD COLLEGE?

It's a great time to get into the creative sector with growth at more than twice the rate of other industries. Our Art & Design courses are accredited by the prestigious UALAB (University of the Arts London Awarding Body) and we've state-of-art facilities at Sutton Coldfield College that include vast workshop spaces and studios to help you specialise in the disciplines of fine art, illustration and textiles. The UALAB Level 3 Art & Design Diploma allows you to specialise in your chosen pathway of 3D applied design, fashion and textiles or visual communication.

SUBJECT	LEVEL		
	1	2	3
UAL 3D Applied Design Diploma			■
UAL Art & Design Diploma	■	■	■
UAL Art & Design Foundation Diploma			■
UAL Fashion & Textiles Diploma			■
UAL Theatre Arts, Film & TV Design Diploma			■

Entry Requirements

A guide to our entry requirements can be found on page 2. For specific course entry requirements please visit the relevant section at bmet.ac.uk.

Career opportunities

Our students go on to become:

- Animators
- Exhibition Designers
- Fine Artists
- Graphic Designers
- Illustrators
- Printmakers
- Production Designers
- Fashion Designers
- Textile Designers
- And Many More

Art & Design courses are also available at

Matthew Boulton College
James Watt College
Art & Design Centre
Kidderminster Academy



BUSINESS & PROFESSIONAL SERVICES

WHY STUDY BUSINESS & PROFESSIONAL SERVICES AT SUTTON COLDFIELD COLLEGE?

Business and professional services are constantly growing and evolving providing a wealth of employment opportunities across different job sectors. Our 'working' office environment at Sutton Coldfield College enables you to experience the multiple duties performed by administrators such as reception desk, co-ordinating print jobs and mail outs and preparing large databases. What's more you can be part of the Greater Birmingham Professional Services Academy, located at nearby Matthew Boulton College, with their links to the region's business community you'll get to benefit from the expertise of some of the area's leading business professionals. Specific entry criteria may apply for some courses.

SUBJECT	LEVEL		
	1	2	3
AAT Accounting Certificate		■	
AAT Accounting Diploma			■
Business Administration Diploma	■	■	
Business Diploma			■
Business Extended Certificate		■	
Business Law Diploma			■
CILEX Legal Secretaries Certificate		■	■
Marketing Apprenticeship	Apprenticeships are offered at varying levels		
Customer Service Apprenticeship			
Business Administration Apprenticeship			
Financial Services Administrator Trailblazer Apprenticeship standard			
Financial Services - Investment Operations Standard Apprenticeship			
Operation Delivery Officer Apprenticeship			
Journalism Apprenticeship			
Paralegal Apprenticeship			
Recruitment Resourcer Apprenticeship			
HR Apprenticeship - HR Support Apprenticeship			
Event Management Apprenticeship			
Assistant Accountant Apprenticeship			
Management Apprenticeship			
Team Leading Apprenticeship			
Accounting Apprenticeship			

Entry Requirements

A guide to our entry requirements can be found on page 2. For specific course entry requirements please visit the relevant section at bmet.ac.uk.

Career opportunities

Our students go on to become:

- Bankers
- Business Analysts
- Insurance Brokers
- Stock Brokers
- Retailers
- Barristers
- Solicitors
- Corporate Lawyers
- Legal Executives
- And Many More

Business & Professional courses are also available at

Matthew Boulton College
James Watt College
Stourbridge College



CHILDCARE & EARLY YEARS

WHY STUDY CHILDCARE & EARLY YEARS AT SUTTON COLDFIELD COLLEGE?

The childcare and early years sector is worth £5.57 billion in the UK and there is a constant demand for high quality care professionals. More and more people with children require childcare services so the industry is growing all the time. We offer a range of childcare courses from Level 1 to Level 3 and childcare Apprenticeships.

Entry Requirements

A guide to our entry requirements can be found on page 2. For specific course entry requirements please visit the relevant section at bmet.ac.uk.

Career opportunities

Our students go on to become:

- Parent Partnerships Workers
- Inclusion Support Workers
- School or Nursery Managers
- And Many More

Childcare & Early Years courses are also available at

Matthew Boulton College
James Watt College
Stourbridge College

SUBJECT	LEVEL		
	1	2	3
Intro Health & Social Care Children and Young Peoples Workforce Award	■		
CACHE Childcare & Education Diploma			■
CACHE Introduction to Early Years Education & Care Certificate		■	
Childcare & Education Certificate			■
Children & Young People's Workforce & Health & Social Care Certificate	■		
Childcare and Early Years Apprenticeship	Apprenticeships are offered at varying levels		

COMPUTER SCIENCE & ICT

WHY STUDY COMPUTER SCIENCE & ICT AT SUTTON COLDFIELD COLLEGE?

Up-to-date skills and knowledge in computer science and ICT are in greater demand than ever. Our IBM Smarter Planet Collaboratory at Sutton Coldfield College, launched in February 2013, contains cloud-based social collaboration software which will enhance the knowledge you gain and ensure you're using cutting edge technology during your studies with us.

SUBJECT	LEVEL		
	1	2	3
Apps and Software Development			■
Creative Computing & IT Diploma			■
IT User Diploma	■	■	
IT Telecomms Apprenticeship	Apprenticeships are offered at varying levels		
Infrastructure Technician Apprenticeship			

Career opportunities

Our students go on to become:

- Database Administrators
- Technical Support Staff
- Programmers
- App Designers
- Computer Game Developers
- Multimedia Designers
- Systems Developers
- Web Designers
- And Many More

Computer & ICT courses are also available at

Matthew Boulton College
Stourbridge College

Entry Requirements

A guide to our entry requirements can be found on page 2. For specific course entry requirements please visit the relevant section at bmet.ac.uk.

FOUNDATION LEARNING

WHY STUDY FOUNDATION LEARNING AT SUTTON COLDFIELD COLLEGE?

Our foundation learning courses are designed to help you build the skills employers want and we teach English and maths alongside everything in a fun interactive way because we know how important these skills are in everyday life. You don't need any formal qualifications and we offer a wide range of support to help you get the skills you need to progress.

SUBJECT	ENTRY LEVEL			LEVEL 1
	1	2	3	
ESOL 16-18	■	■	■	
Life & Living Skills	■	■	■	
Vocational Studies FESOL Award				■
Vocational Studies (Bridge to Success)				■
Vocational Studies (Entrance to Success)			■	

Entry Requirements

A guide to our entry requirements can be found on page 2. For specific course entry requirements please visit the relevant section at bmet.ac.uk.

Career opportunities

Most of our students go on to study Level 1, 2 and 3 qualifications in a wide variety of subject areas.

Foundation Learning courses are also available at

Matthew Boulton College
James Watt College
Stourbridge College
Art & Design Centre
Centre of Sporting Excellence
Kidderminster Academy

HEALTH & SOCIAL CARE

WHY STUDY HEALTH & SOCIAL CARE SUTTON COLDFIELD COLLEGE?

Promoting a healthy lifestyle, caring for the elderly and infirm and becoming a medical practitioner are arguably some of the most fulfilling career paths a person could pursue. Studying to join the health, medical and care profession means understanding the theory behind physiology and anatomy and being aware of government initiatives and healthcare policies relating to patient and client care.

SUBJECT	LEVEL		
	1	2	3
Health & Social Care Diploma			■

Entry Requirements

A guide to our entry requirements can be found on page 2. For specific course entry requirements please visit the relevant section at bmet.ac.uk.

Career opportunities

Our students go on to become:

- Nurses
- Midwives
- Physiotherapists
- Dieticians
- And Many More

Health & Social Care courses are also available at

Matthew Boulton College
James Watt College
Stourbridge College



MEDIA, MUSIC & PERFORMANCE

WHY STUDY MEDIA, MUSIC & PERFORMANCE AT SUTTON COLDFIELD COLLEGE?

Our Performing Arts Academy based at Sutton Coldfield College has a growing reputation for excellence in the teaching of acting, dance and musical theatre; with many successful productions and performances being held at indoor and outdoor locations across the area.

SUBJECT	LEVEL		
	1	2	3
Acting Diploma			■
Dance Diploma			■
Music Performance Diploma		■	■
Musical Theatre Diploma			■
Performing Arts Diploma	■	■	
UAL Interactive Media Production Diploma			■

Entry Requirements

A guide to our entry requirements can be found on page 2. For specific course entry requirements please visit the relevant section at bmet.ac.uk.

Career opportunities

Our students go on to become:

- Writers
- Directors
- Producers
- Technicians
- Music Arrangers
- Editors
- Sound Engineers
- Stage Managers
- Backing Vocalists
- Booking Agents
- Box Office Managers
- Choreographers
- And Many More

Media, Music & Performance courses are also available at

Matthew Boulton College
James Watt College
Stourbridge College
Kidderminster Academy

SCIENCE & MEDICAL

WHY STUDY SCIENCE & MEDICAL AT SUTTON COLDFIELD COLLEGE?

Sutton Coldfield College boasts exceptional laboratories for the teaching of applied, forensic and medical science. We are also the regional STEM (Science, Technology, Engineering and Mathematics) Centre for the West Midlands. This means we host and participate in many events that promote the study of these subjects at GCSE level and beyond.

- Microbiologists
- Paramedics
- And Many More

Science & Medical courses are also available at
Matthew Boulton College
Stourbridge College

SUBJECT	LEVEL		
	1	2	3
Applied Science Diploma	■		■
Applied Science Certificate		■	
Medical Science Diploma		■	■

Entry Requirements

A guide to our entry requirements can be found on page 2. For specific course entry requirements please visit the relevant section at bmet.ac.uk.

Career opportunities

Our students go on to become:

- Astronomers
- Biologists
- Meteorologists
- Ecologists
- Researchers
- Forensic Scientists
- Biomedical Scientists
- Clinical Biochemists
- Radiologists



SPORT & EXERCISE SCIENCE

WHY STUDY SPORT & EXERCISE SCIENCE AT SUTTON COLDFIELD COLLEGE?

Our BMet Sports Academy was awarded “College of the Year” by British Colleges Sport (BCS) and the Association of Colleges (AoC) for 2013 and Sutton Coldfield College’s exceptional facilities were used by Western Samoa as a training base during the 2015 Rugby World Cup. Sports performance and excellence courses are delivered at Sutton Coldfield and with a number of university-level courses, you can even continue your studies at BMet to achieve a higher level qualification such as a Foundation Degree.

- Personal Trainers
- Fitness Instructors
- Gym Managers
- PE Teachers
- And Many More

Sport courses are also available at
James Watt College
Stourbridge College
Centre of Sporting Excellence

SUBJECT	LEVEL		
	1	2	3
Activity Leadership in Sports Coaching & Development Certificate		■	
Sport & Exercise Sciences Diploma			■
Sport Coaching Development & Fitness Diploma			■
Sport Leadership & Active Leisure Diploma	■		
Sport Performance & Excellence Diploma			■

Entry Requirements

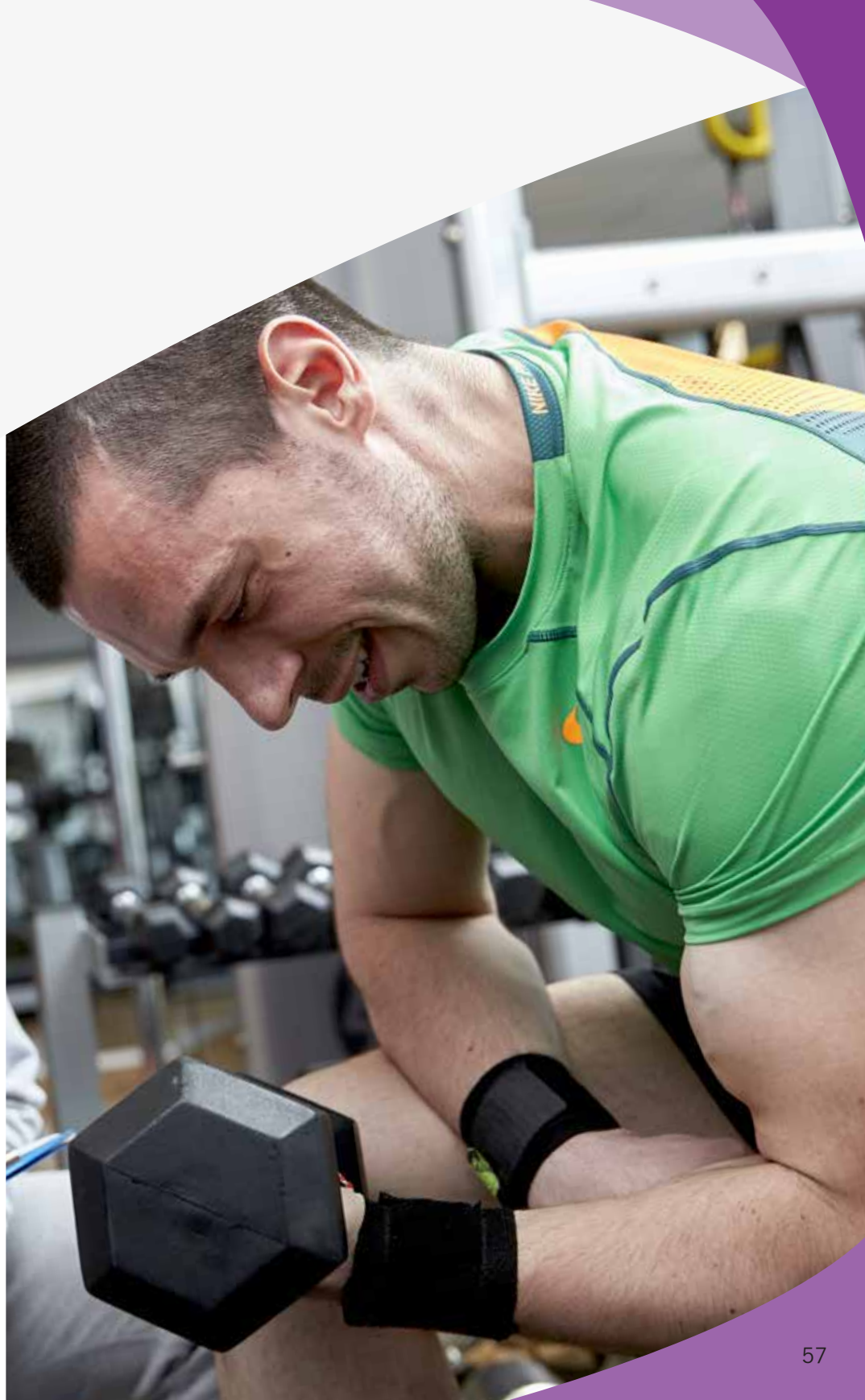
A guide to our entry requirements can be found on page 2. For specific course entry requirements please visit the relevant section at bmet.ac.uk.

Career opportunities

Our students go on to become:

- Sports Coaches
- Sports Therapists
- Physiotherapists





TRAVEL & TOURISM

WHY STUDY TRAVEL & TOURISM AT SUTTON COLDFIELD COLLEGE?

Our travel and tourism qualifications will give you the knowledge and skills required to pursue careers in tour operations, accommodation, promotion, hospitality and event planning. The Airline Cabin Room at Sutton Coldfield College gives you a real taste of the airline industry with passenger seating areas and aisles, plus in flight essentials such as beverage menus and oxygen masks. We also work with Birmingham Airport to deliver our Aviation Operations Diploma with students training at the airport facilities one day per week.

- Tourism and Visitor Information Officers
- And Many More

Travel & Tourism courses are also available at
James Watt College

SUBJECT	LEVEL		
	1	2	3
Aviation Operations Diploma			■
Travel & Tourism Diploma			■
Travel & Tourism Extended Certificate		■	

Entry Requirements

A guide to our entry requirements can be found on page 2. For specific course entry requirements please visit the relevant section at bmet.ac.uk.

Career opportunities

Our students go on to become:

- Airline Cabin Crew
- Business Travel Advisors
- Travel Agents



UNIFORMED PUBLIC SERVICES

WHY STUDY UNIFORMED PUBLIC SERVICES AT SUTTON COLDFIELD COLLEGE?

Our courses can prepare you for a career within the armed forces, police, fire, ambulance, navy, RAF, prison, security or immigration services. You'll get to visit army barracks, RAF bases and training grounds so that you can develop a better understanding of what it means to represent the uniformed services. Physical fitness is very important in many of these roles, along with good communication, team working and problem solving skills and our superb sports facilities at Sutton Coldfield College will help you to train and build your physical strength and fitness.

Entry Requirements

A guide to our entry requirements can be found on page 2. For specific course entry requirements please visit the relevant section at bmet.ac.uk.

Career opportunities

Our students go on to become:

- Police Officers
- Military Personnel
- RAF Personnel
- Emergency Services Personnel
- And Many More

Uniformed Services courses are also available at

James Watt College
Stourbridge College

SUBJECT	LEVEL		
	1	2	3
Uniformed Public Services Diploma		■	■



James Watt College

part of **BMet**

JAMES WATT COLLEGE
ALDRIDGE ROAD, GREAT BARR

Sitting on the Aldridge Road, right on the 997 bus route through north Birmingham, James Watt College has recently had a £4.5 million major refurbishment so that it can offer an even better learning environment in which you can develop your skills. The College features a fully-equipped, professional quality TV studio, beauty salon, gym, media suite, Sustainable Technologies Centre and construction workshops.

The Sustainable Technologies Centre will allow students to learn how to install, maintain and service a wider range of new green technologies. The new centre will include the following technologies: Solar Thermal, Solar Photovoltaic, Ground and Air Source Heat Pumps, Combined Heat and Power and brand new technologies not currently available in the UK.

In addition to its impressive facilities, it is a centre of excellence for work-based training. If the College could be summed up in four words it would be: 'let's go to work'. The gas and electrical engineering workshops are the envy of many commercial operations and the expertise of the teaching staff means students emerge from the courses with the skills, experience and knowledge to go to work the next day. The College also incorporates the Samsung Digital Appliance Academy; this incorporates the latest White Goods Technology and the digital connected home.

While studying it's important to keep your energy levels up so our Costa coffee shop and large canteen has plenty of healthy and tasty choices. There is also a well-equipped learning resource centre, where students can take advantage of free periods to catch up on coursework or revise.

JAMES WATT COLLEGE

The image shows the exterior of a modern building, identified by large white 3D signage as James Watt College. The building features a facade of dark grey panels and rows of windows, some of which are partially covered by light-colored vertical rectangular elements. A large, stylized green graphic, consisting of overlapping curved shapes, is positioned on the left side of the image, partially obscuring the building's facade.



ART & DESIGN

WHY STUDY ART & DESIGN AT JAMES WATT COLLEGE?

It's a great time to get into the creative sector with growth at more than twice the rate of other industries. Our Art & Design courses are accredited by the prestigious UALAB (University of the Arts London Awarding Body). What's more our UALAB Digital Art & Design courses allow you to specialise in films and film-making, broadcast media, print media, journalism and publishing, marketing and advertising, games design, interactive and mobile design, animation for films and games or documentary photography.

SUBJECT	LEVEL		
	1	2	3
UAL Art & Design Diploma	■	■	

Entry Requirements

A guide to our entry requirements can be found on page 2. For specific course entry requirements please visit the relevant section at bmet.ac.uk.

Career opportunities

Our students go on to become:

- Animators
- Exhibition Designers
- Fine Artists
- Graphic Designers
- Illustrators
- Printmakers
- Production Designers
- Fashion Designers
- Textile Designers
- And Many More

Art & Design courses are also available at

Matthew Boulton College
Sutton Coldfield College
Art & Design Centre
Kidderminster Academy

BUSINESS & PROFESSIONAL

WHY STUDY BUSINESS & PROFESSIONAL AT JAMES WATT COLLEGE?

Business and professional services continue to grow and evolve within Birmingham and the Black Country. Our learners go on to take a leading role in the region's economic development; whether it's working in management, financial services, property, law, human resources or marketing and advertising. What's more, you can be part of the Greater Birmingham Professional Services Academy located at nearby Matthew Boulton College with their links to the region's business community – you'll get to benefit from the expertise of some of the area's leading business professionals. Specific entry criteria may apply for some courses.

SUBJECT	LEVEL		
	1	2	3
Business Diploma			■
Business Extended Certificate		■	

Entry Requirements

A guide to our entry requirements can be found on page 2. For specific course entry requirements please visit the relevant section at bmet.ac.uk.

Career opportunities

Our students go on to become:

- Bankers
- Business Analysts
- Insurance Brokers
- Stock Brokers
- Retailers
- Barristers
- Solicitors
- Corporate Lawyers
- Legal Executives
- And Many More

Business & Professional Services courses are also available at

Matthew Boulton College
Sutton Coldfield College
Stourbridge College

CHILDCARE & EARLY YEARS

WHY STUDY CHILDCARE AND EARLY YEARS AT JAMES WATT COLLEGE?

The childcare and early years sector is worth £5.57 billion in the UK and there is a constant demand for high quality care professionals. More and more people with children require childcare services so the industry is growing all the time. We offer a range of childcare courses from Level 1 to Level 3 and childcare Apprenticeships.

Childcare & Early Years courses are also available at

Matthew Boulton College
Sutton Coldfield College
Stourbridge College

SUBJECT	LEVEL		
	1	2	3
Intro Health & Social Care Children and Young Peoples Workforce Award	■		
CACHE Introduction to Early Years Education & Care Certificate		■	
Children & Young People's Workforce & Health & Social Care Certificate	■		

Entry Requirements

A guide to our entry requirements can be found on page 2. For specific course entry requirements please visit the relevant section at bmet.ac.uk.

Career opportunities

Our students go on to become:

- Parent Partnerships Workers
- Inclusion Support Workers
- School or Nursery Managers
- And Many More





CONSTRUCTION & SUSTAINABLE TECHNOLOGIES

WHY STUDY CONSTRUCTION & SUSTAINABLE TECHNOLOGIES AT JAMES WATT COLLEGE?

The building trade is soaring – with over 200,000 construction jobs set to be created in the next five years, according to the Construction Industry Training Board. At James Watt College you can learn traditional trades such as plumbing and electrical techniques taught in our Baxi Innovation Academy - one of the UK's leading facilities for the teaching of construction - and develop skills in sustainability, renewable energies and green technologies in our recently built Sustainability Centre.

Entry Requirements

A guide to our entry requirements can be found on page 2. For specific course entry requirements please visit the relevant section at bmet.ac.uk.

Career opportunities

Our students go on to become:

- Electricians
- Plumbers
- Construction Managers
- Gas Engineers
- And Many More

Construction & Sustainable Technologies courses are also available at

Erdington Skills Centre
Stourbridge College

SUBJECT	LEVEL		
	1	2	3
Electrical Installation Diploma	■	■	■
Gas Diploma			■
Plumbing Diploma	■	■	
Electrotechnical Apprenticeship	Apprenticeships are offered at varying levels		
Electrical Installation Apprenticeship			
Gas Apprenticeship			
Plumbing and Heating Apprenticeship			

ENGINEERING

WHY STUDY ENGINEERING AT JAMES WATT COLLEGE?

A report by Engineering UK estimates that more than 2 million more people will be working in engineering over the next 5 – 10 years. James Watt College is home to state of the art engineering workshop suites that include the latest CNC manual and machine tools. CAD and autocad software is available to equip you with the ability to produce drawings of the highest standard for architectural and engineering development.

SUBJECT	LEVEL		
	1	2	3
Performing Engineering Operations Certificate	■		
Engineering Diploma			■
Engineering Technologies Diploma		■	
Engineering Manufacture Apprenticeship	Apprenticeships are offered at varying levels		
Electrical & Electronic Servicing Apprenticeship			

Entry Requirements

A guide to our entry requirements can be found on page 2. For specific course entry requirements please visit the relevant section at bmet.ac.uk.

Career opportunities

Our students go on to become:

- Aeronautical Engineers
- CAD Technicians
- Software Developers
- Telecommunications Specialists
- Design Consultants
- Safety Officers
- And Many More

Engineering courses are also available at

Matthew Boulton College
Stourbridge College



FASHION & RETAIL

WHY STUDY FASHION & RETAIL AT JAMES WATT COLLEGE?

Careers in retail form two strands – on the front line you can go into production, buying, marketing and branding and distribution and logistics. Retail support functions include market research, HR, finance and merchandising as well as online trading. If the creative side is what you prefer then your skills and experience can take you into designing, tailoring, visual presentation/styling and production management. Our courses equip you with the skills that employers require. You'll get to increase your confidence and experience with practical projects such as organising an 'on location' photoshoot, an end of year show, producing a magazine, creating a catwalk event or running a pop up shop.

- Marketing/Brand Managers
- Merchandisers
- And Many More

Fashion & Retail courses are also available at

Matthew Boulton College
Kidderminster Academy

SUBJECT	LEVEL		
	1	2	3
Fashion and Retail Diploma		■	■

Entry Requirements

A guide to our entry requirements can be found on page 2. For specific course entry requirements please visit the relevant section at bmet.ac.uk.

Career opportunities

Our students go on to become:

- Fashion Designers
- Tailors
- Production Managers
- Stylists
- Buyers



FOUNDATION LEARNING

WHY STUDY FOUNDATION LEARNING AT JAMES WATT COLLEGE?

Foundation learning is the name given to courses at entry level and level 1 and is a great opportunity for you to continue your education at your pace. We offer personalised programmes all aimed around your individual needs, with lots of support so you can get the most out of your course.

SUBJECT	ENTRY LEVEL			LEVEL
	1	2	3	1
ESOL 16-18	■	■	■	
Life and Living Skills	■	■	■	
Vocational Studies				■
Vocational Studies (Bridge to Success)				■
Vocational Studies (Entrance to Success)			■	

Entry Requirements

A guide to our entry requirements can be found on page 2. For specific course entry requirements please visit the relevant section at bmet.ac.uk.

Career opportunities

Our students go on to become:

- Most of our students go on to study Level 1, 2 and 3 qualifications in a wide variety of subject areas.

Foundation Learning courses are also available at

Matthew Boulton College
Sutton Coldfield College
Stourbridge College
Art & Design Centre
Centre of Sporting Excellence

HAIR, BEAUTY & COMPLEMENTARY THERAPIES

WHY STUDY HAIR, BEAUTY & COMPLEMENTARY THERAPIES AT JAMES WATT COLLEGE?

If you like being creative, enjoy working with others and want to help people look and feel their best then you should consider studying Hair, Beauty & Complementary Therapies at James Watt. We have specialist facilities where you can develop your skills. You can even deliver treatments to members of the public in our Aura Salon and Spa.

Entry Requirements

A guide to our entry requirements can be found on page 2. For specific course entry requirements please visit the relevant section at bmet.ac.uk.

Career opportunities

Our students go on to become:

- Stylists
- Beauty Therapists
- Spa Practitioners
- Make-up Artists
- And Many More

Hair, Beauty & Complementary Therapies courses are also available at
Kidderminster Academy

SUBJECT	LEVEL		
	1	2	3
Beauty Diploma		■	
Hair & Beauty Diploma	■		
Hair & Media Make-up Diploma		■	
Men's Hairdressing Diploma		■	
Spa & Body Treatments Diploma			■
Theatrical, Special Effects, Hair & Media Make-up Diploma			■
Women's Hairdressing Colouring & Cutting Diploma		■	
Women's Hairdressing Diploma			■
Barbering Apprenticeship	Apprenticeships are offered at varying levels		
Hairdressing Apprenticeship			
Beauty Apprenticeship			

HEALTH & SOCIAL CARE

WHY STUDY HEALTH & SOCIAL CARE JAMES WATT COLLEGE?

Promoting a healthy lifestyle, caring for the elderly and infirm and becoming a medical practitioner are arguably some of the most fulfilling career paths a person could pursue. Studying to join the health, medical and care profession means understanding the theory behind physiology and anatomy and being aware of government initiatives and healthcare policies relating to patient and client care.

Health, Social Care and Early Years courses are also available at

Matthew Boulton College
Sutton Coldfield College
Stourbridge College

SUBJECT	LEVEL		
	1	2	3
Health & Social Care Certificate		■	
Health & Social Care Diploma			■
Health and Social Care Apprenticeship	Apprenticeships are offered at varying levels		

Entry Requirements

A guide to our entry requirements can be found on page 2. For specific course entry requirements please visit the relevant section at bmet.ac.uk.

Career opportunities

Our students go on to become:

- Nurses
- Midwives
- Physiotherapists
- Dieticians
- And Many More



MEDIA, MUSIC & PERFORMANCE

WHY STUDY MEDIA, MUSIC & PERFORMANCE AT JAMES WATT COLLEGE?

James Watt College specialises in media production and games design and covers a wide range of digital and creative media areas such as film, television, animation, games design, radio, print, web and social media. All of our courses are accredited by the prestigious UALAB (University of the Arts London Awarding Body) ensuring you an interview at any UALAB course at universities around the country.

- Web Designers
- Interactive Media Designers
- And Many More

Media, Music & Performance courses are also available at

Matthew Boulton College
Sutton Coldfield College
Stourbridge College
Kidderminster Academy

SUBJECT	LEVEL		
	1	2	3
UAL Games Design Diploma		■	■
UAL Interactive Media Production Diploma		■	■
UAL Interactive Media Production Diploma			■
Creative Digital Media Apprenticeship	Apprenticeships are offered at varying levels		

Entry Requirements

A guide to our entry requirements can be found on page 2. For specific course entry requirements please visit the relevant section at bmet.ac.uk.

Career opportunities

Our students go on to become:

- TV, Film and Radio Producers
- Technicians
- Directors
- Games Designers



MOTORCYCLE MAINTENANCE

WHY STUDY MOTORCYCLE MAINTENANCE AT JAMES WATT COLLEGE?

Our motorcycle repair and maintenance courses are an excellent stepping stone for people interested in providing maintenance and repair services to motorcycle and scooter owners that rely on their vehicles for travel, work and leisure. James Watt College is also home to state of the art engineering workshop suites that include the latest CNC manual and machine tools.

Career opportunities

Our students go on to become:

- Mechanics
- Motorcycle Technicians
- Motorcycle Parts Advisors
- And Many More

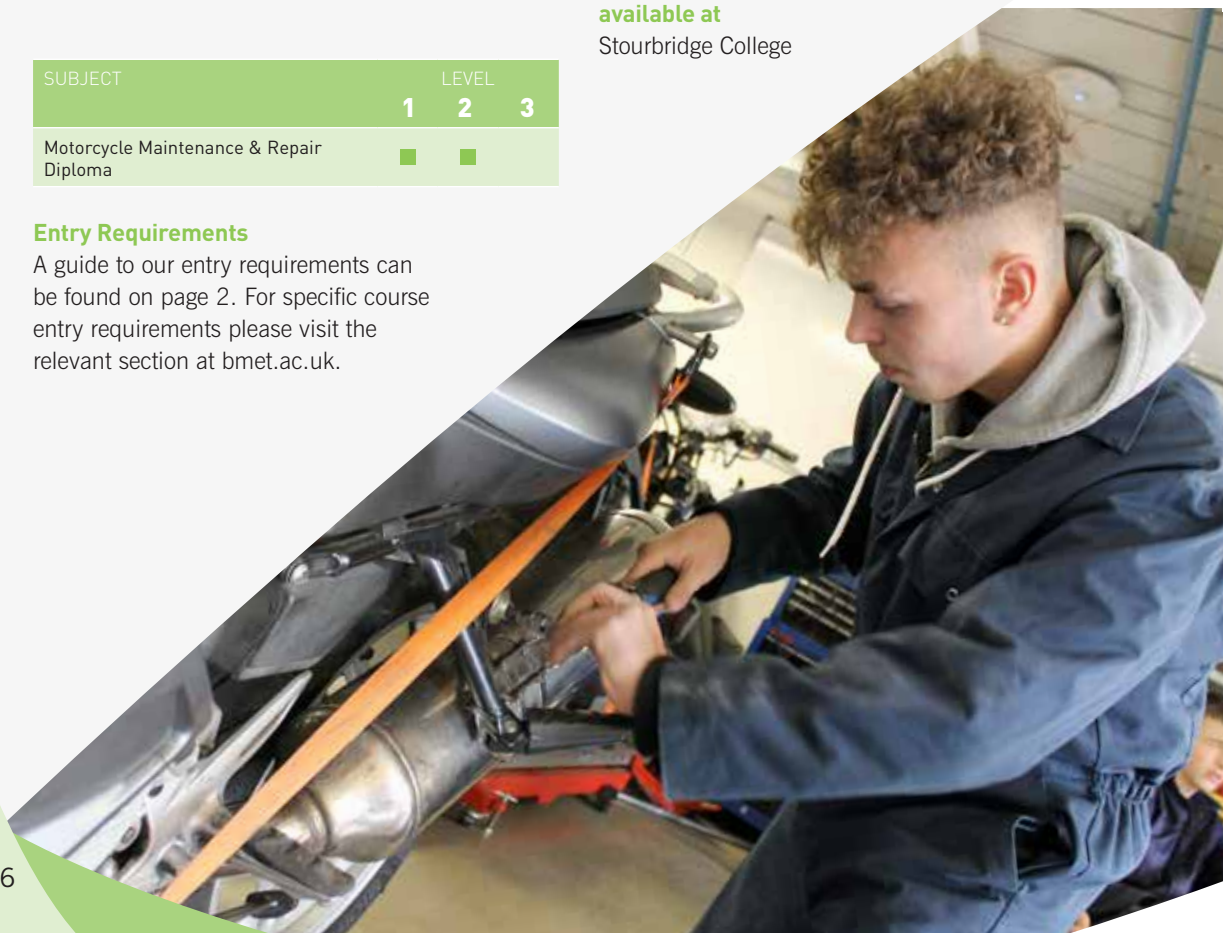
Motor Vehicle courses are also available at

Stourbridge College

SUBJECT	LEVEL		
	1	2	3
Motorcycle Maintenance & Repair Diploma	■	■	

Entry Requirements

A guide to our entry requirements can be found on page 2. For specific course entry requirements please visit the relevant section at bmet.ac.uk.



SPORT & EXERCISE SCIENCE

WHY STUDY SPORT & EXERCISE SCIENCE AT JAMES WATT COLLEGE?

If you enjoy sport and fitness then why not develop your interest into an exciting lifelong career. You could end up a personal trainer, PE teacher or sports coach. James Watt College boasts excellent facilities including a brand new gym.

SUBJECT	LEVEL		
	1	2	3
Active IQ Intro Fitness & Healthy Lifestyles Diploma	■		
Active IQ NVQ Exercise & Fitness Diploma		■	
Exercise and Fitness Apprenticeship	Apprenticeships are offered at varying levels		

Entry Requirements

A guide to our entry requirements can be found on page 2. For specific course entry requirements please visit the relevant section at bmet.ac.uk.

Career opportunities

Our students go on to become:

- Sports Coaches
- Sports Therapists
- Physiotherapists
- Personal Trainers
- Fitness Instructors
- Gym Manager
- PE Teacher
- And Many More

Sport courses are also available at

Sutton Coldfield College
Stourbridge College
Centre of Sporting Excellence



TRAVEL & TOURISM

WHY STUDY TRAVEL & TOURISM AT JAMES WATT COLLEGE?

Our travel and tourism qualifications will give you the knowledge and skills required to pursue careers in tour operations, accommodation, promotion, hospitality and event planning. We also work with Birmingham Airport to deliver our Aviation Operations Diploma with students training at the airport facilities one day per week.

SUBJECT	LEVEL		
	1	2	3
Aviation Operations Diploma			■
Travel & Tourism Diploma			■
Travel & Tourism Extended Certificate		■	

Entry Requirements

A guide to our entry requirements can be found on page 2. For specific course entry requirements please visit the relevant section at bmet.ac.uk.

Career opportunities

Our students go on to become:

- Airline Cabin Crew
- Business Travel Advisors
- Travel Agents
- Tourism and Visitor Information Officers
- And Many More

Travel & Tourism courses are also available at Sutton Coldfield College



UNIFORMED PUBLIC SERVICES

WHY STUDY UNIFORMED PUBLIC SERVICES AT JAMES WATT COLLEGE?

Our courses can prepare you for a career within the armed forces, police, fire, ambulance, navy, RAF, prison, security or immigration services. You'll get to visit army barracks, RAF bases and training grounds so that you can develop a better understanding of what it means to represent the uniformed services. Physical fitness is very important in many of these roles, along with good communication, team working and problem solving skills and our superb gym facilities at James Watt College will help you to train and build your physical strength and fitness.

Entry Requirements

A guide to our entry requirements can be found on page 2. For specific course entry requirements please visit the relevant section at bmet.ac.uk.

Career opportunities

Our students go on to become:

- Police Officers
- Military Personnel
- RAF Personnel
- Emergency Services Personnel
- And Many More

Uniformed Public Services courses are also available at

Sutton Coldfield College
Stourbridge College

SUBJECT	LEVEL		
	1	2	3
Uniformed Public Services Diploma		■	■



Erdington Skills Centre

part of **BMet**

ERDINGTON SKILLS CENTRE
EDWARDS ROAD, ERDINGTON

The Erdington Skills Centre currently offers a range of Entry, Level 1, 2 and 3 construction courses.

The Skills Centre has had a major investment in the last year and now offers purpose built facilities including classrooms and workshops which have been specifically designed to house training rooms for all of the construction trades including painting and decorating, plastering, carpentry and joinery and electrical as well as general training rooms with increased access to technology.

CONSTRUCTION & SUSTAINABLE TECHNOLOGIES

WHY STUDY CONSTRUCTION & SUSTAINABLE TECHNOLOGIES AT ERDINGTON SKILLS CENTRE?

Thanks to a £4 million redevelopment our new Erdington Skills Centre boasts brand new, purpose built classrooms and workshops where you can learn traditional trades such as bricklaying, plumbing, carpentry, plastering and electrical techniques. According to the Construction Industry Training Board there will be over 200,000 jobs created in the building trade over the next five years so there's no better time to learn the skills needed to join the construction industry.

Entry Requirements

A guide to our entry requirements can be found on page 2. For specific course entry requirements please visit the relevant section at bmet.ac.uk.

Career opportunities

Our students go on to become:

- Bricklayers
- Plasterers
- Carpenters
- Electricians
- Plumbers
- Construction Managers
- And Many More

Construction & Sustainable Technologies courses are also available at

James Watt College
Stourbridge College

SUBJECT	LEVEL		
	1	2	3
Bricklaying Diploma	■	■	■
Carpentry & Joinery Diploma	■	■	■
Multi-skills Diploma	■		
Plastering Diploma	■	■	
Bricklaying Apprenticeship	Apprenticeships are offered at varying levels		
Carpentry Apprenticeship			
Painting and Decorating Apprenticeship			
Plastering Apprenticeship			

FOUNDATION LEARNING

WHY STUDY FOUNDATION LEARNING AT THE ERDINGTON SKILLS CENTRE?

Foundation learning is the name given to courses at entry level and Level 1 and is a great opportunity for you to continue your education at your pace. We offer personalised programmes all aimed around your individual needs, with lots of support so you can get the most out of your course.

SUBJECT	ENTRY LEVEL			LEVEL
	1	2	3	1
Basic Construction Diploma				■

Entry Requirements

A guide to our entry requirements can be found on page 2. For specific course entry requirements please visit the relevant section at bmet.ac.uk.

Career opportunities

Our students go on to become:

- Most of our students go on to study Level 1, 2 and 3 qualifications in a wide variety of subject areas.

Foundation Learning courses are also available at

Matthew Boulton College
Sutton Coldfield College
James Watt College
Stourbridge College
Art & Design Centre
Centre of Sporting Excellence





STOURBRIDGE COLLEGE
HAGLEY ROAD, STOURBRIDGE

Stourbridge College has a main site on Hagley Road in Stourbridge Town Centre in the Black Country and a specialist site in Brierley Hill (Art and Design Centre) offering a wide range of vocational, academic and Apprenticeship courses for people of all ages.

In Autumn 2016 we opened the doors to our newly refurbished £1.5 million Construction Centre. This provides state-of-the-art learning facilities in the fields of carpentry and joinery, plumbing, gas and electrical installation, and the built environment, which includes construction management and surveying. This completes an exciting £6.5 million pound refurbishment of the facilities at Stourbridge College. Students are already benefitting from a new reception area as well as meeting spaces, brand new classrooms and a new Centre of Excellence for Early Years, Health & Social Care and IT.

The redevelopment complements a recent £1 million investment in a new engineering block, refurbished science laboratories, a new refectory and a modern, state of the art learning resources centre equipped with the latest technology to help students study and learn.

Stourbridge College is ideally located and is in walking distance of Stourbridge Town Centre, the Stourbridge bus interchange and main railway station, Stourbridge Junction.

The College is very popular for students looking to study Level 3 qualifications and move on to university because of the high success rates achieved by our learners, as well as for those looking to learn a vocation and go straight into the world of work. Our focus is to treat every student as an individual to maximise their potential.





A LEVELS

THE BMet SIXTH FORM EXPERIENCE

BMet understands that leaving school is a big step. At our Matthew Boulton College, Stourbridge College and Sutton Coldfield College sites we offer the sixth form experience with award winning facilities and an excellent record of academic achievement. We have a special ethos where everyone is encouraged and supported both academically and personally. We pride ourselves on not only preparing you for university study but also for the world of work. With more subjects on offer than any other college in the area and a package of extras, we know we have something for everyone.

'A' Levels

You will study A Level subjects for two years and will be examined in them at the end of this period. AS subjects may be available for you to select, but these are now stand alone qualifications and do not contribute to the final A Level grade.

When you enrol on an A Level programme at BMet you will be asked to choose three different subjects which will be studied throughout the two year course.

A Levels at Stourbridge College

- AAT Accounting Diploma
- Biology
- Business Studies
- Chemistry
- Computing
- Criminology Certificate
- Drama & Theatre Studies
- English Language & Literature
- English Literature
- Geography
- History
- Law
- Maths
- Media Studies
- Physics
- Psychology
- Religious Studies
- Sociology
- Sport Certificate

BUSINESS & PROFESSIONAL SERVICES

WHY STUDY BUSINESS & PROFESSIONAL SERVICES AT STOURBRIDGE COLLEGE?

Taking courses in business, accounting and law can equip you with the knowledge and skills required to really make a difference to today's society. We have fantastic links with employers so you'll have the opportunity to put business principles into practice and benefit from the expertise of some of the area's leading business professionals. The Academy offers guru lectures and workshops, business visits and networking, mentoring with professionals and work placement experiences and internships. What's more you can be part of the Greater Birmingham Professional Services Academy, located at our Matthew Boulton College, providing you with access to the city's professional and financial firms to ensure you are ready to work for leading businesses. Specific entry criteria may apply for some courses.

SUBJECT	LEVEL		
	1	2	3
AAT Certificate in Accounting		■	
AAT Diploma in Accounting			■
Business Administration Diploma	■		
Business Diploma			■
Business Extended Certificate		■	
Customer Service Apprenticeship	Apprenticeships are offered at varying levels		
Management Apprenticeship			
Team Leading Apprenticeship			
Accounting Apprenticeship			
Paralegal Apprenticeship			
HR Support Apprenticeship			
Event Management Apprenticeship			

Entry Requirements

A guide to our entry requirements can be found on page 2. For specific course entry requirements please visit the relevant section at bmet.ac.uk.

Career opportunities

Our students go on to become:

- Bankers
- Business Analysts
- Insurance Brokers
- Stock Brokers
- Retailers
- Barristers
- Solicitors
- Corporate Lawyers
- Legal Executives
- Marketers
- And Many More

Business & Professional Services courses are also available at

Matthew Boulton College
Sutton Coldfield College
James Watt College





CHILDCARE & EARLY YEARS

WHY STUDY CHILDCARE AND EARLY YEARS AT STOURBRIDGE COLLEGE?

The childcare and early years sector is worth £5.57 billion in the UK and there is a constant demand for high quality care professionals. More and more people with children require childcare services so the industry is growing all the time. We offer a range of childcare courses from Level 1 to Level 3 and childcare Apprenticeships.

Entry Requirements

A guide to our entry requirements can be found on page 2. For specific course entry requirements please visit the relevant section at bmet.ac.uk.

Career opportunities

Our students go on to become:

- Parent Partnerships Workers
- Inclusion Support Workers
- School or Nursery Managers
- And Many More

Childcare & Early Years courses are also available at

Matthew Boulton College
Sutton Coldfield College
James Watt College

SUBJECT	LEVEL		
	1	2	3
Intro Health & Social Care Children and Young Peoples Workforce Award	■		
CACHE Childcare & Education Diploma			■
CACHE Introduction to Early Years Education & Care Certificate		■	
Children & Young People's Workforce & Health & Social Care Certificate	■		
Children's Play, Learning & Development Certificate			■
Childcare and Early Years Apprenticeship	Apprenticeships are offered at varying levels		

COMPUTER SCIENCE & ICT

WHY STUDY COMPUTER SCIENCE & ICT AT STOURBRIDGE COLLEGE?

ICT touches nearly every aspect of our lives: the way we work, the way we learn, the way we communicate and the way we socialise. Almost every job requires computing skills and these skills are in greater demand than ever. We have partnerships with IBM, Samsung, CISCO and other leading IT companies meaning you learn up-to-date and relevant skills to ensure you have the skills required by business to help you secure a great career.

SUBJECT	LEVEL		
	1	2	3
Apps and Software Development			■
Creative Computing & IT Diploma			■
IT User Diploma	■	■	
IT Telecomms Apprenticeship	Apprenticeships are offered at varying levels		

Entry Requirements

A guide to our entry requirements can be found on page 2. For specific course entry requirements please visit the relevant section at bmet.ac.uk.

Career opportunities

Our students go on to become:

- Database Administrators
- Technical Support Staff
- Programmers
- App Designers
- Computer Game Developers
- Multimedia Designers
- Systems Developers
- Web Designers
- And Many More

Computer & ICT courses are also available at

Matthew Boulton College
Sutton Coldfield College



CONSTRUCTION & THE BUILT ENVIRONMENT

WHY STUDY CONSTRUCTION & THE BUILT ENVIRONMENT AT STOURBRIDGE COLLEGE?

In Autumn 2016 our newly refurbished £1.5 million Construction Centre opened at Stourbridge College.

The Construction Centre provides state-of-the-art learning facilities in the fields of carpentry and joinery, plumbing, gas and electrical installation, and the built environment, which includes construction management and surveying

This investment allows us to increase our full-time student places to 350 - plus additional apprenticeships – and provides a purpose designed Centre of Excellence for you to study in.

Entry Requirements

A guide to our entry requirements can be found on page 2. For specific course entry requirements please visit the relevant section at bmet.ac.uk.

Career opportunities

Our students go on to become:

- Carpenters
- Electricians
- Plumbers
- Construction Managers
- And Many More

Construction & Sustainable Technologies courses are available at

James Watt College
Erdington Skills Centre

SUBJECT	LEVEL		
	1	2	3
Carpentry & Joinery Diploma	■	■	■
Construction and the Built Environment Diploma			■
Electrical Installation Diploma	■	■	■
Plumbing Diploma	■	■	■
Bench Joinery Apprenticeship	Apprenticeships are offered at varying levels		
Carpentry Apprenticeship			
Electrical Installation Apprenticeship			
Electrotechnical Apprenticeship			
Plumbing & Heating Apprenticeship			

ENGINEERING

WHY STUDY ENGINEERING AT STOURBRIDGE COLLEGE?

Engineers shape the world we live in; from the computers we use to the planes, trains, ships and cars we travel in. Engineering is a diverse field and one that is important for the future. Engineers are involved in all aspects of designing, building and testing new technologies and products. Creativity and problem solving are at the heart of every engineering industry. An engineer is a problem solver who uses their knowledge to provide solutions to complex situations.

We've enhanced our engineering facilities as part of our £6.5 million investment for local students at Stourbridge College to help train the 2 million more people that are likely to be working in engineering over the next 5 – 10 years. Our facilities, expertise and partnerships with companies including Jaguar Land Rover, Caterpillar and BMW provides our students with the opportunity to innovate, problem solve and prepare for an interesting career in engineering.

Career opportunities

Our students go on to become:

- Aeronautical Engineers
- CAD Technicians
- Software Developers
- Telecommunication Specialists
- Design Consultants
- Safety Officers
- And Many More

Engineering courses are also available at

Matthew Boulton College
James Watt College

SUBJECT	LEVEL		
	1	2	3
Engineering Certificate	■		
Engineering Diploma		■	
Engineering Technologies Diploma		■	
Engineering Apprenticeship	Apprenticeships are offered at varying levels		

Entry Requirements

A guide to our entry requirements can be found on page 2. For specific course entry requirements please visit the relevant section at bmet.ac.uk.



FOUNDATION LEARNING

WHY STUDY FOUNDATION LEARNING AT STOURBRIDGE COLLEGE?

Foundation learning is the name given to courses at entry level and Level 1 and is a great opportunity for you to continue your education at your pace. We offer personalised programmes all aimed around your individual needs, with lots of support so you can get the most out of your course. Stourbridge College is a Centre of Excellence for Foundation Learning. Here we offer bite sized courses to keep you interested, motivated and inspired. Our aim is to give you a new love of learning that you thought you may never have.

SUBJECT	ENTRY LEVEL			LEVEL	
	1	2	3	1	2
Food preparation and Cooking				■	
Introduction to the Hospitality Industry			■		
Occupational Studies in the workplace					■

Entry Requirements

A guide to our entry requirements can be found on page 2. For specific course entry requirements please visit the relevant section at bmet.ac.uk.

Career opportunities

Most of our students go on to study Level 1, 2 and 3 qualifications in a wide variety of subject areas.

Foundation Learning courses are also available at

Matthew Boulton College
Sutton Coldfield College
James Watt College
Art & Design Centre
Centre of Sporting Excellence



HEALTH & SOCIAL CARE

WHY STUDY HEALTH & SOCIAL CARE AT STOURBRIDGE COLLEGE?

This is one of the largest occupational sectors, providing work for just under two million people and is set to grow further over the coming years. In response to this growing demand we have invested £6.5 million at Stourbridge College and as part of this investment have opened a new Centre of Excellence for Health & Social Care. These courses are extremely popular amongst school leavers as well as adults returning to study to enhance their career opportunities.

- Inclusion Support Workers
- School or Nursery Managers
- And Many More

Health, Social Care & Early Years courses are also available at

Matthew Boulton College
Sutton Coldfield College
James Watt College

SUBJECT	LEVEL		
	1	2	3
Health & Social Care Diploma Level 3			■
Health and Social Care Apprenticeship	Apprenticeships are offered at varying levels		

Entry Requirements

A guide to our entry requirements can be found on page 2. For specific course entry requirements please visit the relevant section at bmet.ac.uk.

Career opportunities

Our students go on to become:

- Nurses
- Midwives
- Physiotherapists
- Dieticians
- Parent Partnerships Workers





HORSE & ANIMAL CARE

WHY STUDY HORSE & ANIMAL CARE AT STOURBRIDGE COLLEGE?

If you are interested in a career working with horses, our equine courses will give you a taste of the industry. We have teamed up with three of the best riding stables around to give you the skills and experience you need for a successful career. We work with established riding stables to deliver the practical elements of the course. The stables are based in Halesowen, Stourbridge and Hartlebury. All stables are ABRS and BHS certified and have experienced tutors to make sure you learn from the best.

SUBJECT	LEVEL		
	1	2	3
Horse Care Diploma		■	
Horse Care Management Diploma			■

Entry Requirements

A guide to our entry requirements can be found on page 2. For specific course entry requirements please visit the relevant section at bmet.ac.uk.

Career opportunities

Our students go on to become:

- Jockeys
- Stable Hands
- Trainers
- Grooms
- Stud Managers
- Riding Instructors
- Breeders
- Equine Physiotherapists
- And Many More

Horse & Animal Care courses are also available at

Kidderminster Academy

MEDIA, MUSIC & PERFORMANCE

WHY STUDY MEDIA, MUSIC & PERFORMANCE AT STOURBRIDGE COLLEGE?

Our exciting music courses provide you with all of the essential expertise and industry experience you need to improve your confidence and technical ability within the field, leaving you with strong career prospects for specific roles you want to pursue. Stourbridge College is a Centre of Excellence for Creative Industries and students have access to recently refurbished music facilities including a recording studio, staged performing area, rehearsal rooms and both Mac and PC music production classrooms.

SUBJECT	LEVEL		
	1	2	3
Music Performance Diploma			■

Entry Requirements

A guide to our entry requirements can be found on page 2. For specific course entry requirements please visit the relevant section at bmet.ac.uk.

Career opportunities

Our students go on to become:

- Writers
- Directors
- Producers
- Technicians
- Music Arrangers
- Editors
- Sound Engineers
- Stage Managers
- Backing Vocalists
- Booking Agents
- Box Office Managers
- Choreographers
- And Many More

Media, Music & Performance courses are also available at

Matthew Boulton College
Sutton Coldfield College
James Watt College
Kidderminster Academy



MOTOR VEHICLE

WHY STUDY MOTOR VEHICLE AT STOURBRIDGE COLLEGE?

As vehicles become more complicated and as government standards become more stringent, properly maintaining vehicles requires professional servicing by skilled people.

Our new specialist motor vehicle workshops at Stourbridge College provides the facilities alongside expert tutors to help you compete for jobs in this sector.

SUBJECT	LEVEL		
	1	2	3
Motor Vehicle Diploma	■	■	■
Motor Vehicle Apprenticeship	Apprenticeships are offered at varying levels		

Entry Requirements

A guide to our entry requirements can be found on page 2. For specific course entry requirements please visit the relevant section at bmet.ac.uk.

Career opportunities

Our students go on to become:

- Mechanics
- Motorcycle Technicians
- Motorcycle Parts Advisor
- Service Engineers
- Body Repairers
- Engine Reconditioners
- And Many More

Motorcycle Maintenance is available at

James Watt College



SCIENCE & MEDICAL

WHY STUDY SCIENCE & MEDICAL AT STOURBRIDGE COLLEGE?

Science lets us observe and draw upon our understanding of the physical and natural world, enabling us to make exciting new discoveries and apply this knowledge in various ways. Our exceptional facilities will help you grasp the basics and specialise in scientific study which can lead to fascinating careers in so many different areas. We're the regional STEM (Science, Technology, Engineering and Mathematics) Centre for the West Midlands. This means we host and participate in many events that promote the study of these subjects at GCSE level and beyond.

SUBJECT	LEVEL		
	1	2	3
Applied Science Certificate		■	
Applied Science Diploma			■
Pharmacy Apprenticeship	Apprenticeships are offered at varying levels		
Dental Nursing Apprenticeship			

Career opportunities

Our students go on to become:

- Astronomers
- Biologists
- Meteorologists
- Ecologists
- Researchers
- Forensic Scientists
- Biomedical Scientists
- Clinical Biochemists
- Radiologists
- Microbiologists
- Paramedics
- And Many More

Science & Medical courses are also available at

Matthew Boulton College
Sutton Coldfield College

Entry Requirements

A guide to our entry requirements can be found on page 2. For specific course entry requirements please visit the relevant section at bmet.ac.uk.



SPORT & EXERCISE SCIENCES

WHY STUDY SPORT & EXERCISE SCIENCES AT STOURBRIDGE COLLEGE?

We have excellent facilities at Stourbridge College including a well-equipped gym and access to a range of local facilities at our Centre of Sporting Excellence (CoSE) which is based on the outskirts of Kidderminster at Brinton's Field. The facilities include six football pitches, two rugby pitches, a 'trophy' pitch, a golf driving range and a strength and conditioning gym spread over 40 acres of land.

We also have use of partner community sports facilities including local golf, boxing and rugby clubs and the playing fields are used by Kidderminster Harriers Football Academy. Our unique partnerships mean that students study for sport related academic courses as well as developing their sporting skills with professional, qualified and experienced coaches across all academies with the opportunity to take part in local, regional and national competitions.

SUBJECT	LEVEL		
	1	2	3
Boxing Academy Diploma	■		■
Boxing Academy First Extended Certificate		■	
Football Academy Diploma (Female)			■
Football Academy First Extended Certificate (Female)		■	
Golf Academy Diploma	■		■
Golf Academy First Extended Certificate		■	
Rugby Academy Diploma	■		■

SUBJECT	LEVEL		
	1	2	3
Rugby Academy First Extended Certificate		■	
Sport Coaching Development & Fitness Diploma			■
Sport First Extended Certificate		■	
Sport Leadership & Active Leisure Diploma	■		

Entry Requirements

A guide to our entry requirements can be found on page 2. For specific course entry requirements please visit the relevant section at bmet.ac.uk.

Career opportunities

Our students go on to become:

- Sports Coaches
- Sports Therapists
- Physiotherapists
- Personal Trainers
- Fitness Instructors
- Gym Managers
- PE Teachers
- And Many More

Sport courses are also available at

Sutton Coldfield College
James Watt College
Centre of Sporting Excellence

UNIFORMED PUBLIC SERVICE

WHY STUDY UNIFORMED PUBLIC SERVICES AT STOURBRIDGE COLLEGE?

If you want to do something worthwhile, where you face new and challenging situations on a daily basis, then a career in the army of public services could be for you. This sector offers a variety of roles with the army alone having more than 200 individual jobs.

On our courses, you'll get to visit army barracks, RAF bases and training grounds so that you can develop a better understanding of what it means to represent the uniformed services and to prepare you well for your first role. Physical fitness is very important in many of these roles, along with good communication, team working and problem solving skills and our superb sports facilities will help you to train and build your physical strength and fitness.

Entry Requirements

A guide to our entry requirements can be found on page 2. For specific course entry requirements please visit the relevant section at bmet.ac.uk.

Career opportunities

Our students go on to become:

- Police Officers
- Military Personnel
- RAF Personnel
- Emergency Services Personnel
- And Many More

Uniformed Services courses are also available at

Sutton Coldfield College
James Watt College

SUBJECT	LEVEL		
	1	2	3
Uniformed Public Services Diploma		■	■





Art and Design Centre

part of **BMet**

ART & DESIGN CENTRE
VENTURE WAY, BRIERLEY HILL

The Art & Design Centre is on the doorstep of the Merry Hill Centre and Brierley Hill Town Centre so is convenient for bus links and shops as well as great markets.

The fantastic new £12million building is home to state of the art studios, workshops and facilities including an iMac Suite, an Art Shop selling a range of materials, sketch books, paint brushes, card and paper and gallery exhibition space on two floors.

A LEVELS

THE BMet SIXTH FORM EXPERIENCE

BMet understands that leaving school is a big step. At our Matthew Boulton College, Stourbridge College and Sutton Coldfield College sites we offer the sixth form experience with award winning facilities and an excellent record of academic achievement. We have a special ethos where everyone is encouraged and supported both academically and personally. We pride ourselves on not only preparing you for university study but also for the world of work. With more subjects on offer than any other college in the area and a package of extras, we know we have something for everyone.

'A' Levels

You will study A Level subjects for two years and will be examined in them at the end of this period. AS subjects may be available for you to select, but these are now stand alone qualifications and do not contribute to the final A Level grade.

When you enrol on an A Level programme at BMet you will be asked to choose three different subjects which will be studied throughout the two year course.

A Levels at the Art and Design Centre

- 3D Design
- Art & Design (Graphics)
- Fine Art
- Photography
- Textile Design



ART & DESIGN

WHY STUDY ART & DESIGN AT THE ART & DESIGN CENTRE?

With growth at more than twice the rate of other industries there's never been a better time to get into the creative sector. Our courses are accredited by the prestigious UALAB (University of the Arts London Awarding Body) ensuring you an interview at any UAL course at universities around the country. The UALAB Level 3 Art & Design Diploma allows you to specialise in your chosen pathway of 3D applied design, fashion and textiles or visual communication.

SUBJECT	LEVEL		
	1	2	3
UAL 3D Applied Design Diploma			■
UAL Art & Design Diploma	■	■	■
UAL Art & Design Foundation Diploma			■
UAL Fashion & Textiles Diploma			■
UAL Visual Communication Diploma			■

Entry Requirements

A guide to our entry requirements can be found on page 2. For specific course entry requirements please visit the relevant section at bmet.ac.uk.

Career opportunities

Our students go on to become:

- Animators
- Exhibition Designers
- Fine Artists
- Graphic Designers
- Illustrators
- Printmakers
- Production Designers
- Fashion Designers
- Textile Designers
- And Many More

Art & Design courses are also available at

Matthew Boulton College
Sutton Coldfield College
James Watt College
Kidderminster Academy



FOUNDATION LEARNING

WHY STUDY FOUNDATION LEARNING AT THE ART & DESIGN CENTRE?

Foundation learning is the name given to courses at entry level and Level 1 and is a great opportunity for you for you to continue your education at your own pace.

The Art & Design Centre in Brierley Hill is the home to our newly opened Independent Living Centre. The Centre provides opportunities for students to develop their independence with a range of skills including budgeting, planning menus for a healthy life style and carrying out maintenance at home. The unit includes a number of classroom areas aimed at providing students with the opportunity to gain vital skills in an environment conducive to their learning requirements.

SUBJECT	ENTRY LEVEL			LEVEL	
	1	2	3	1	2
Entrance to Practical Activities			■		
Food Preparation and Cooking				■	
Life and Living Skills	■	■	■		
Occupational Studies				■	
Occupational Studies (Catering)					■
Vocational Studies (Bridge to Success)				■	

Entry Requirements

A guide to our entry requirements can be found on page 2. For specific course entry requirements please visit the relevant section at bmet.ac.uk.

Career opportunities

Most of our students go on to study Level 1, 2 and 3 qualifications in a wide variety of subject areas.

Foundation Learning courses are also available at

Matthew Boulton College
Sutton Coldfield College
James Watt College
Stourbridge College
Centre of Sporting Excellence





Centre of Sporting Excellence

part of **BMet**

CENTRE OF SPORTING EXCELLENCE
BRINTONS FIELD, ZORTECH AVENUE, KIDDERMINSTER

The Centre of Sporting Excellence (CoSE) is based on the outskirts of Kidderminster at Brinton's Field. This is our specialist facility for sports courses at Kidderminster Academy and Stourbridge College.

The facilities include access to six football pitches, two rugby pitches, a 'trophy' pitch, a golf driving range and a strength and conditioning gym spread over 40 acres of land.

We also have use of partner community sports facilities including local golf, boxing and rugby clubs and the playing fields are also used by Kidderminster Harriers Football Academy.

The Centre of Sporting Excellence offers a range of Sports Academies which are designed to bridge the gap between community sports and education.

Alongside the sports courses Foundation Learning offer courses in horticulture and catering. On site there are professional facilities including poly tunnels, a glass house and a fully equipped catering kitchen and serving area. Learners study in real working environments and we have links with the local community, which enhance their experience.

FOUNDATION LEARNING

WHY STUDY FOUNDATION LEARNING AT CoSE?

Foundation learning courses are personalised programmes which help and support you providing a great opportunity for you to continue your education at your pace. Our courses are designed to help you build the skills employers want. We teach English and maths alongside everything but in a fun interactive way to help you develop these important skills required in everyday life.

Entry Requirements

A guide to our entry requirements can be found on page 2. For specific course entry requirements please visit the relevant section at bmet.ac.uk.

Career opportunities

Most of our students go on to study Level 1, 2 and 3 qualifications in a wide variety of subject areas.

Foundation Learning courses are also available at

Matthew Boulton College
Sutton Coldfield College
James Watt College
Stourbridge College
Art & Design Centre

SUBJECT	ENTRY LEVEL			LEVEL	
	1	2	3	1	2
Occupational Studies (Catering)					■
Skills for Working Life		■	■		
Practical Horticulture				■	■
Food Preparation and Cooking				■	



SPORT & EXERCISE SCIENCE

WHY STUDY SPORT & EXERCISE SCIENCE AT CoSE?

Our Centre of Sporting Excellence (CoSE) is based on the outskirts of Kidderminster at Brinton's Field. The facilities include six football pitches, two rugby pitches, a 'trophy' pitch, a golf driving range and a strength and conditioning gym spread over 40 acres of land. Our Football Academy students have the excellent opportunity to train alongside Kidderminster Harriers FC and this, along with our other unique partnerships, mean that students develop their sporting skills with professional, qualified and experienced coaches.

SUBJECT	LEVEL		
	1	2	3
Football Academy Certificate (Male)		■	
Football Academy Diploma (Male)			■
Sport Coaching Development & Fitness Diploma			■
Sport Leadership & Active Leisure Diploma	■		

Entry Requirements

A guide to our entry requirements can be found on page 2. For specific course entry requirements please visit the relevant section at bmet.ac.uk.

Career opportunities

Our students go on to become:

- Sports Coaches
- Sports Therapists
- Physiotherapists
- Personal Trainers
- Fitness Instructors
- Gym Manager
- PE Teacher
- And Many More

Sport courses are also available at

Sutton Coldfield College
James Watt College
Stourbridge College



Kidderminster Academy

part of **BMet**

KIDDERMINSTER ACADEMY
WEAVERS WHARF, KIDDERMINSTER

Kidderminster Academy is a skills and entrepreneurial centre, set in the heart of the town with easy transport links around the Midlands. It was created from an industrial building nicknamed the Piano Building because of its shape and has won an award for innovative conversion. It's not like any other college you've been in, bare brick, glass walls and large scale installations all go together to make it a truly inspirational space.



ART & DESIGN

WHY STUDY ART & DESIGN AT KIDDERMINSTER ACADEMY?

Our Art & Design courses at Kidderminster Academy are accredited by the prestigious UALAB (University of the Arts London Awarding Body). It's a great time to get into the creative sector with growth at more than twice the rate of other industries and where better to study than at our award winning building.

SUBJECT	LEVEL		
	1	2	3
UAL Art & Design Diploma	■	■	

Entry Requirements

A guide to our entry requirements can be found on page 2. For specific course entry requirements please visit the relevant section at bmet.ac.uk.

Career opportunities

Our students go on to become:

- Animators
- Exhibition Designers
- Fine Artists
- Graphic Designers
- Illustrators
- Printmakers
- Production Designers
- Fashion Designers
- Textile Designers
- And Many More

Art & Design courses are also available at

Matthew Boulton
Sutton Coldfield College
James Watt College
Art & Design Centre



FASHION & RETAIL

WHY STUDY FASHION & RETAIL AT KIDDERMINSTER ACADEMY?

Careers in retail form two strands – on the front line you can go into production, buying, marketing and branding and distribution and logistics. Retail support functions include market research, HR, finance and merchandising as well as online trading. If the creative side is what you prefer then your skills and experience can take you into designing, tailoring, visual presentation/styling and production management. Our courses equip you with the skills that employers require. You'll get to increase your confidence and experience with practical projects such as organising an 'on location' photoshoot, an end of year show, producing a magazine, creating a catwalk event or running a pop up shop.

- Tailors
- Production Managers
- Stylists
- Buyers
- Marketing/Brand Managers
- Merchandisers
- And Many More

Fashion & Retail courses are also available at

Matthew Boulton
James Watt College

SUBJECT	LEVEL		
	1	2	3
Fashion Styling & Photographic Make-up Diploma			■
Retail Skills Diploma	■		
UAL Fashion & Clothing Diploma		■	■
Retail Apprenticeship	Apprenticeships are offered at varying levels		

Entry Requirements

A guide to our entry requirements can be found on page 2. For specific course entry requirements please visit the relevant section at bmet.ac.uk.

Career opportunities

Our students go on to become:

- Fashion Designers



HAIR, BEAUTY & COMPLEMENTARY THERAPIES

WHY STUDY

HAIR, BEAUTY & COMPLEMENTARY THERAPIES AT KIDDERMINSTER ACADEMY?

Show off your creative prowess with a cutting edge career in Hairdressing & Barbering. From colours to cuts and beyond, our specialist courses are designed to ensure you have the best possible start in a career that is ever-changing and never out of fashion.

- Health Spa Managers
- And Many More

Hair, Beauty & Complementary Therapies courses are also available at
James Watt College

SUBJECT	LEVEL		
	1	2	3
Hair & Beauty Diploma	■		
Hair & Media Make-up Diploma		■	
Theatrical, Special Effects, Hair & Media Make-up Diploma			■
Hairdressing Apprenticeship	Apprenticeships are offered at varying levels		

Entry Requirements

A guide to our entry requirements can be found on page 2. For specific course entry requirements please visit the relevant section at bmet.ac.uk.

Career opportunities

Our students go on to become:

- Stylists
- Make-Up Artists
- Beauty Therapists
- Spa Practitioners
- Cosmetic Scientists
- Salon Proprietors



HORSE & ANIMAL CARE

WHY STUDY ANIMAL CARE AT KIDDERMINSTER ACADEMY?

Working with animals is unlike any other sector, whether it is working at a rescue centre or a zoo, the roles are exciting and varied. Kidderminster Academy's Animal Care courses are delivered in partnership with West Midland Safari Park. Students studying the course will spend one day a week at Kidderminster Academy and two days a week at the Safari Park where they will get the opportunity to work with snakes, spiders, armadillos and racoon dogs. Staff at the Safari Park offer hands on animal care and welfare advice as well as real life experience in a working environment.

SUBJECT	LEVEL		
	1	2	3
Animal Care Diploma		■	■

Entry Requirements

A guide to our entry requirements can be found on page 2. For specific course entry requirements please visit the relevant section at bmet.ac.uk.

Career opportunities

Our students go on to become:

- Animal Wardens
- Researchers
- Writers/Journalists
- Zoo Keepers
- Animal Collection Managers
- Conservation Project Officers
- Groomers
- Veterinary nurses
- And Many More

Horse & Animal Care courses are also available at

Stourbridge College



HOSPITALITY & CATERING

WHY STUDY HOSPITALITY AND CATERING AT KIDDERMINSTER ACADEMY?

At Kidderminster Academy we specialise in hospitality, catering and culinary arts. The Academy is home to a fine dining restaurant and coffee house where students serve their culinary creations to members of the public.

You'll get to develop your culinary arts skills in fully-equipped training kitchens and workspaces and will provide catering and hospitality at many events hosted by local community organisations and at the Academy itself.

SUBJECT	LEVEL		
	1	2	3
Food Preparation and Cooking	■		
Guest Hospitality Services Certificate	■		
Hospitality Services Certificate		■	
Hospitality Services Diploma		■	
Hospitality and Catering Apprenticeship	Apprenticeships are offered at varying levels		

Entry Requirements

A guide to our entry requirements can be found on page 2. For specific course entry requirements please visit the relevant section at bmet.ac.uk.

Career opportunities

Our students go on to become:

- Head Chefs
- Chefs
- Restaurant, Bar or Hotel Managers
- Entertainment or Events Managers
- Receptionists
- Service Assistants or Waiting Staff
- And Many More



MEDIA, MUSIC & PERFORMANCE

WHY STUDY MEDIA, MUSIC & PERFORMANCE AT KIDDERMINSTER ACADEMY?

We've been leading the way in delivering Games Design and Programming courses in the Midlands since 2007. Our courses are accredited by University of Arts London Awarding Body which means project based delivery using UAL specification ensuring you will get an interview at any UALAB course at universities around the country! Work with our industry experienced staff to grow as artists and developers.

SUBJECT	LEVEL		
	1	2	3
UAL Games Design Diploma		■	■
UAL Interactive Media Production Diploma		■	■

Entry Requirements

A guide to our entry requirements can be found on page 2. For specific course entry requirements please visit the relevant section at bmet.ac.uk.

Career opportunities

Our students go on to become:

- TV, Film and Radio Producers
- Technicians
- Directors
- Games Designers
- Web Designers

Media, Music & Performance courses are also available at

Matthew Boulton
Sutton Coldfield College
James Watt College
Stourbridge College



Matthew Boulton College

Jennens Road B4 7PS

Sutton Coldfield College

Lichfield Road B74 2NW

James Watt College

Aldridge Road, Great Barr B44 8NE

Erdington Skills Centre

Edwards Road, Erdington B24 9EW

Birmingham Botanical Gardens

Westbourne Road B15 3TR

Stourbridge College

Hagley Road, Stourbridge DY8 1QU

Art and Design Centre

Venture Way, Brierley Hill DY5 1RG

Kidderminster Academy

Piano Building, Weavers Wharf, Kidderminster DY10 1AA

Centre of Sporting Excellence

Brintons Field, Zortech Avenue, Kidderminster DY11 7DY

t: 0845 155 0101 w: bmet.ac.uk e: ask@bmet.ac.uk

 BMet College  @BMETC  BMETCOLLEGE

 Stourbridge College  @StourbridgeColl