



# HELLO FUTURE

**Careers Service  
for students**

**EVERY STEP  
OF THE WAY**

**2025-2026**



**BMet**

## WHAT DO WE DO?

The College Careers Service is here to help all students of the College

- Plan their career
- Choose the right course
- Change courses, if they need to
- Progress into work, training, or higher education

## WHAT CAN WE PROVIDE?

- Careers information
- Impartial, confidential advice and guidance
- Information about Further Education and university level courses
- Information about training and Apprenticeships
- Help looking for and applying for jobs
- Help applying for university
- Interview advice and preparation for university and employment interviews
- Look out for special support sessions from local universities to help you with applying to university, and finance, organised by your careers team throughout the year.

## WHAT ELSE DO WE PROVIDE?

- Careers Library
- Job and Apprenticeship vacancies and labour market information
- Xello. A software program to help young people make career choices
- HE Prospectus library
- Support to access relevant website and digital platforms to help with job hunting, employability skills and university applications.
- Annual Careers Calendar of Events including Volunteer and Careers Fairs

## SUPPORT FOR PARENTS AND CARERS

If you have any concerns or questions about your child's future career, please contact [careers@bmet.ac.uk](mailto:careers@bmet.ac.uk), where trained professionals will be able to advise.

## HOW CAN YOU GIVE US FEEDBACK ABOUT OUR SERVICE?

- Complete our career surveys throughout the year
- Email [careers@bmet.ac.uk](mailto:careers@bmet.ac.uk)

## CAREERS TEAM AT BMET AND HOW TO CONTACT US

**SUTTON COLDFIELD COLLEGE**  
**Room SC146**

**JAMES WATT COLLEGE**  
**JW013 in LRC**

**ERDINGTON SKILLS CENTRE**

**MATTHEW BOULTON COLLEGE**  
**Room MB307**

or email [careers@bmet.ac.uk](mailto:careers@bmet.ac.uk)  
We look forward to meeting you and helping you make the decisions that are right for you.



## SOME USEFUL WEBSITES AND INTERACTIVE PROGRAMS

Go to the BMet Careers page for lots of useful careers information and advice, including job and Apprenticeship vacancies and labour market information.  
<https://livebmetcac.sharepoint.com/sites/BMetCareers>

### Xello

A computer software program used to help you discover careers ideas. See website above for further details.

### Alex

Alex is our new AI careers bot. You can get personalised career recommendations in 5 minutes. Alex answers questions and offers help straightaway. Chat anytime anywhere

**Scan here to sign up**



### ● Careers Coach

Useful test to help you discover which careers will suit you. Go to [www.bmet.ac.uk](http://www.bmet.ac.uk) to click on the Careers Coach button on the home page  
<https://nationalcareers.service.gov.uk/>

## A careers database from National Careers Service

<https://www.gov.uk/apply-apprenticeship>

## A national database listing current vacancies and giving information about the range of apprenticeships

<https://nationalcareersservice.direct.gov.uk>

## A full on line and telephone careers information and guidance service. Careers Advice, including job profiles, CV and interview advice

<https://prospects.ac.uk>

## The official UK graduate website

<https://ucas.com>

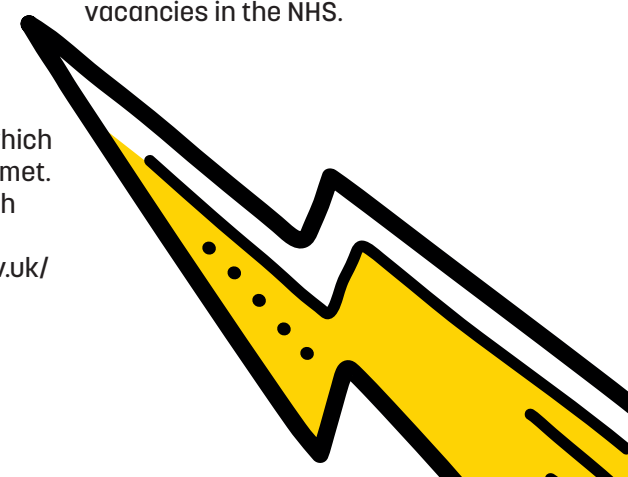
## To find out about applying to university and searching for degree courses

<https://www.gov.uk/student-finance>

## Details of government loans available to cover tuition fees and help towards your living costs whilst studying on Higher Education courses at university or college

<https://healthcareers.nhs.uk>

Details of careers information and vacancies in the NHS.



# HELLO FUTURE



BMet



@BMetC



BmetCollege



BMet

w. [bmet.ac.uk](http://bmet.ac.uk)

t. 0121 446 4545

James Watt College: Aldridge Road Great Barr Birmingham B44 8NE

Matthew Boulton College: Jennens Road Birmingham B4 7PS

Sutton Coldfield College: 34 Lichfield Road Sutton Coldfield B74 2NW



**BMet**